

JAMAICA

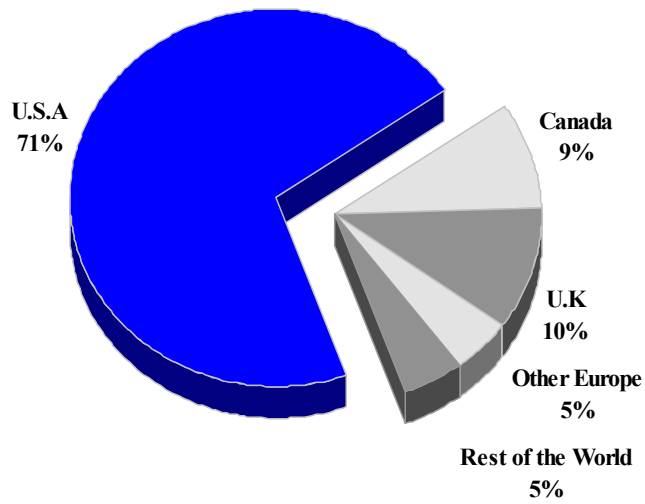
TOURISM HIGHLIGHTS FOR 2006

VISITOR ARRIVALS			
Tourist Arrivals ➔	1,678,905	Cruise Passengers	1,336,453
➔ <i>Summer</i>	64.3%	➔ <i>Summer</i>	61.4%
➔ <i>Winter</i>	35.7%	➔ <i>Winter</i>	38.6%
		Cruise Calls	563
VISITOR PROFILE			
Average Length of Stay (<i>nights</i>)	9.3	Tourist Arrivals by Place of Stay	
Tourist Arrivals by Purpose of Visit		➔ <i>Hotels</i>	65.3%
➔ <i>Holiday</i>	78.8%	➔ <i>Guest Houses/Apartments</i>	4.8%
➔ <i>Business</i>	5.7%	➔ <i>Private</i>	28.7%
➔ <i>Other</i>	15.5%	➔ <i>Other</i>	1.3%
TOURISM AND OTHER RELATED ECONOMIC STATISTICS			
Total Expenditure (<i>US\$ millions</i>)	\$1,436.6	GDP at Factor Cost (<i>US\$ millions</i>)	\$7,976.5
Tourism Budget (<i>US\$ thousands</i>) *	\$29,499	Hotel and Restaurant contribution to GDP	n.a
		Consumer Price Index (<i>%ch. 2004/'03</i>)	13.6
ACCOMMODATION STATISTICS		SOCIO-ECONOMIC STATISTICS	
Rooms	24,947	Land Area (<i>square Kilometres</i>)	11,424
Room Occupancy Rates	61.4%	Population (<i>thousand mid year 2004</i>)	2,649.2

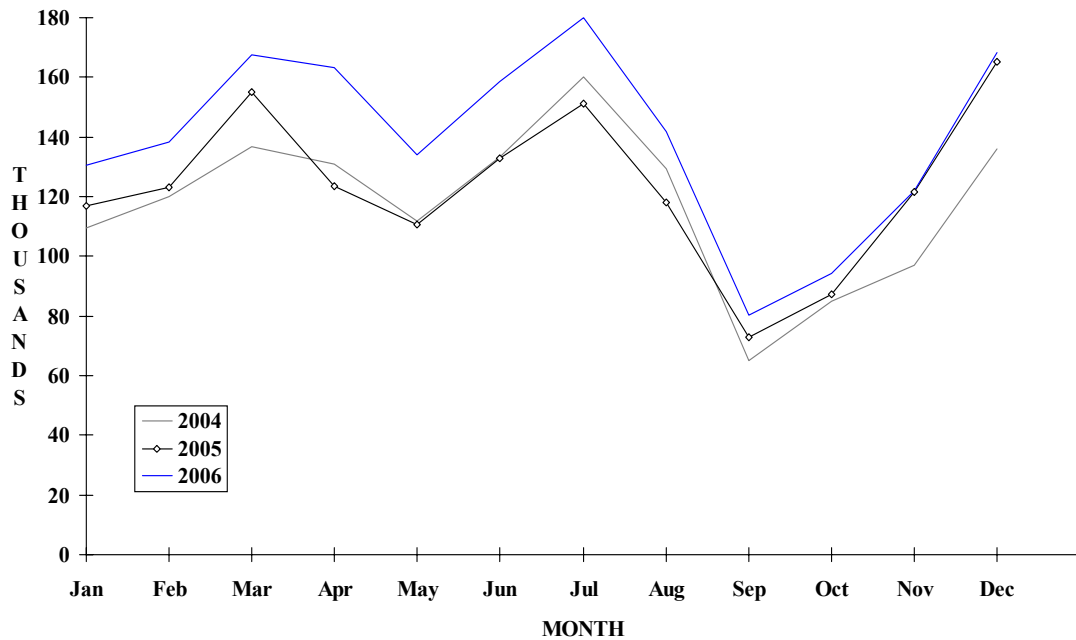
* Actual and fiscal (April-March) 2003/2004

JAMAICA

**TOURIST ARRIVALS BY MAIN MARKETS
2006**



MONTHLY TOURIST ARRIVALS



TOURIST ARRIVALS BY COUNTRY OF RESIDENCE

Country of Residence	2002	2003	2004	2005	2006	% Share 2006
U.S.A	924096	968315	996131	1058317	1190721	70.9
Canada	97413	95265	105623	116862	153569	9.1
United Kingdom	125859	149714	161606	149773	175363	10.4
Other Europe	53230	68786	80319	84106	80711	4.8
Caribbean	45237	48041	52036	50759	56589	3.4
Other Americas	9298	8058	8050	2522	10460	0.6
Rest of World	11233	12106	11021	16324	11492	0.7
TOTAL	1266366	1350285	1414786	1478663	1678905	100.0

MONTHLY TOURIST ARRIVALS

Month	2002	2003	2004	2005	2006	% Change 2006/05
January	90097	101306	109350	116844	130695	11.9
February	100010	111458	120129	123022	138428	12.5
March	130200	129485	136606	155103	167439	8.0
April	100689	111974	131101	123578	163272	32.1
May	99314	102021	111759	110821	133902	20.8
June	113705	122071	133393	132710	158425	19.4
July	137688	144039	160231	151289	180015	19.0
August	118698	128219	129526	117898	141631	20.1
September	75918	76535	64940	72926	80397	10.2
October	80132	86639	84802	87467	94351	7.9
November	96095	98048	97084	121740	121916	0.1
December	123820	138490	135865	165265	168434	1.9
TOTAL	1266366	1350285	1414786	1478663	1678905	13.5

CRUISE PASSENGER ARRIVALS

Month	2002	2003	2004	2005	% Change	
					2006	2006/05
January	91399	118834	124650	111841	134279	20.1
February	76799	116451	115351	112261	118051	5.2
March	79547	128758	129266	150871	153972	2.1
April	75442	108009	109744	98654	109074	10.6
May	54453	64350	64424	74505	83311	11.8
June	54125	64812	76427	73246	88087	20.3
July	64512	84154	68203	59881	85935	43.5
August	57938	63121	69229	75555	98918	30.9
September	52177	68058	48301	69463	78702	13.3
October	58749	95910	61723	68463	99103	44.8
November	82228	100522	98704	110016	131136	19.2
December	118050	119617	133751	131087	155885	18.9
TOTAL	865419	1132596	1099773	1135843	1336453	17.7

Number of Calls	396	502	482	508	563
-----------------	-----	-----	-----	-----	-----

TOURIST ACCOMMODATION (Rooms)

Type of Accommodation	2002	2003	2004	2005	2006
Hotels	16723	16986	17533	18817	19550
Guest Houses	2637	2774	2739	2771	2641
Resort Cottages	3814	3798	3625	3511	3571
Apartment Houses	1065	1067	1050	940	913
TOTAL	24239	24625	24947	26039	26675

Area

Kingston*	2074	2141	2077	2085	2108
Montego Bay	7965	8019	7944	7950	7922
Negril	5647	5851	6414	6426	6449
Ocho Rios	6787	6777	6712	7406	7986
Port Antonio	947	991	986	967	979
Mandeville\South Coast	819	846	814	1205	1231

*Includes the Parish of St. Andrew

Source: Ministry of Tourism - Jamaica

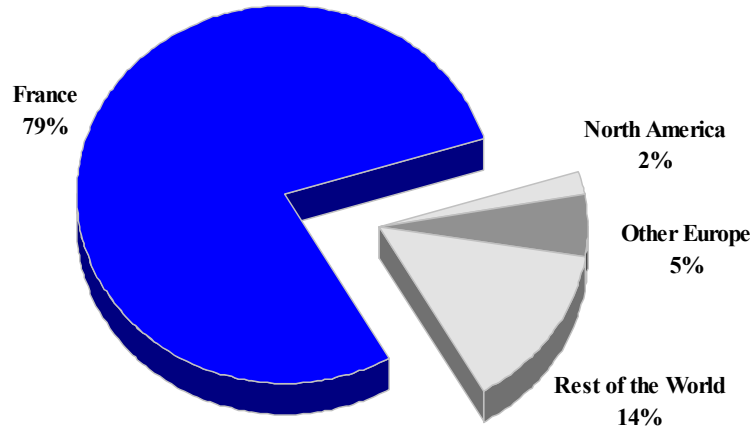
MARTINIQUE

TOURISM HIGHLIGHTS FOR 2006

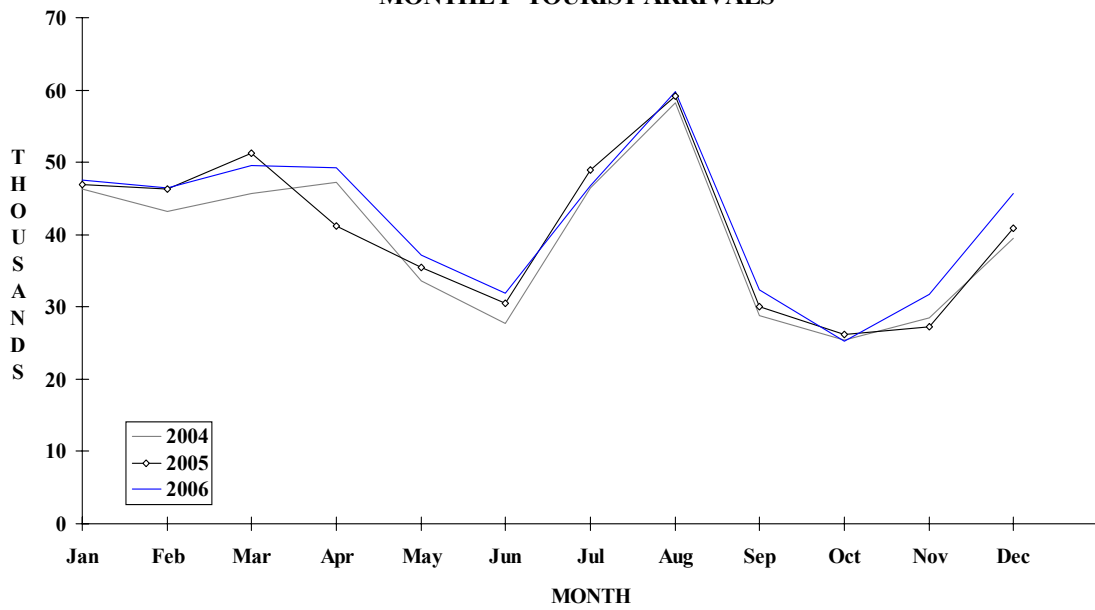
VISITOR ARRIVALS			
Tourist Arrivals ✈ ➔ <i>Summer</i> ➔ <i>Winter</i>	503,475 61.7% 38.3%	Cruise Passengers ➔ <i>Summer</i> ➔ <i>Winter</i> Cruise Ship Calls	96,089 41.8% 58.2% 137
VISITOR PROFILE			
Average Length of Stay (<i>nights</i>) Tourist Arrivals by Purpose of Visit ➔ <i>Holiday</i> ➔ <i>Business</i> ➔ <i>Other</i>	14.4 84.3% 12.4% 3.3%	Tourist Arrivals by Place of Stay ➔ <i>Hotels</i> ➔ <i>Guest Houses/Apartments</i> ➔ <i>Private</i> ➔ <i>Others</i>	36.6% 26.9% 26.3% 10.2%
TOURISM AND OTHER RELATED ECONOMIC STATISTICS			
Total Expenditure (<i>US\$ millions</i>)	\$291.0	Tourism Budget (<i>US\$ '000</i>) ^{viii}	\$7,540
ACCOMMODATION STATISTICS		SOCIO-ECONOMIC STATISTICS	
Rooms ⁱ Room Occupancy Rates	8,298 51.8%	Land Area (<i>square Kilometres</i>) Population (<i>thousand mid year 2003</i>)	1,060 391.0

MARTINIQUE

TOURIST ARRIVALS BY MAIN MARKETS 2006



MONTHLY TOURIST ARRIVALS



TOURIST ARRIVALS BY COUNTRY OF RESIDENCE

Country of Residence	2002	2003	2004	2005	% Share	
					2006	2006
United States	4238	2557	3468	4984	5239	1.0
Canada	4474	2584	3008	4569	4772	0.9
France	349212	357726	373678	369705	395515	78.6
Other Europe	22765	22198	22461	29378	26938	5.4
D.O.M. *	42960	51288	54050	48612	51608	10.3
Other C'bean	15426	12826	10446	18312	15079	3.0
Other Countries	7624	3981	3779	8567	4324	0.9
TOTAL	446699	453160	470890	484127	503475	100.0

*French overseas departments and territories (mainly Guadeloupe)

MONTHLY TOURIST ARRIVALS*

Month	2002	2003	2004	2005	% Change	
					2006	2006/05
January	47005	50019	46320	46904	47576	1.4
February	47168	42326	43244	46296	46387	0.2
March	51572	51607	45712	51239	49514	-3.4
April	43311	47090	47241	41255	49252	19.4
May	30625	31809	33573	35475	37203	4.9
June	25131	27819	27771	30541	31948	4.6
July	38662	40380	46439	48956	46818	-4.4
August	49167	52356	58245	59224	59806	1.0
September	26890	25883	28784	29988	32304	7.7
October	21357	22631	25456	26124	25215	-3.5
November	26516	25451	28547	27271	31719	16.3
December	39285	35789	39558	40854	45733	11.9
TOTAL	446689	453160	470890	484127	503475	4.0

MARTINIQUE

CRUISE PASSENGER ARRIVALS

Month	2002	2003	2004	2005	% Change	
					2006	2006/05
January	24717	31771	26965	16176	16329	0.9
February	18274	31301	23027	12640	12754	0.9
March	11139	29995	28573	17814	16570	-7.0
April	12386	30354	13502	11182	10243	-8.4
May	14683	9095	4160	1382	1026	-25.8
June	13063	12748	4444	0	0	??
July	9357	15154	2896	0	0	??
August	12201	11916	2654	0	0	??
September	3262	14166	1995	0	0	??
October	18560	15849	4528	1981	4529	128.6
November	25597	23953	19644	9177	13397	46.0
December	37608	42240	27028	22711	21241	-6.5
TOTAL	200847	268542	159416	93063	96089	3.3
Cruise Calls	206	218	220	128	137	

TOURIST ACCOMMODATION (Rooms)

Rooms	2002	2003	2004	2005	2006
Total	n.a	8298	n.a	n.a	8261

Source: Agence Regionale de Developpment Touristique de la Martinique (ARDTM)

**THE MEXICAN CARIBBEAN
(CANCUN, COZUMEL RIVERA MAYA)**

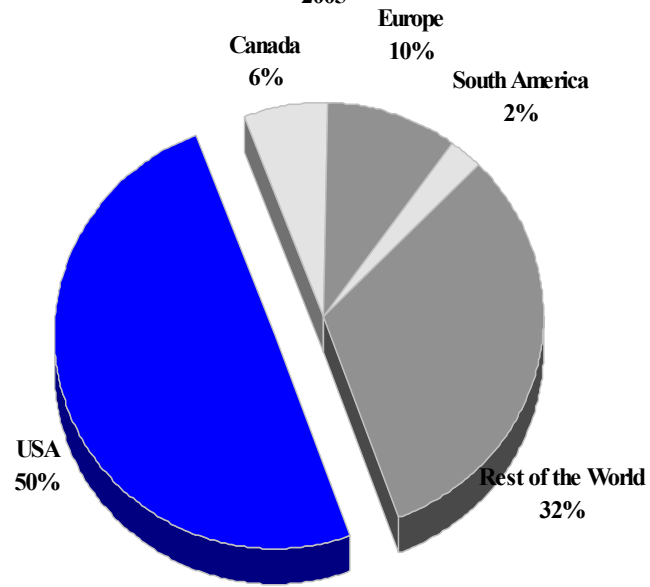
TOURISM HIGHLIGHTS FOR 2006

VISITOR ARRIVALS			
Cancun - Tourist Arrivals ✈	1,586,942	Cozumel - Cruise Passengers	2,352,043
➔ <i>Summer</i>	58.4%	➔ <i>Summer</i>	62.9%
➔ <i>Winter</i>	51.6%	➔ <i>Winter</i>	37.1%
Cozumel - Tourist Arrivals ✈	396,734	Cruise Ship Calls ¹	1,124
Rivera Maya - Tourist Arrivals ✈	1,981,484		
VISITOR PROFILE		ACCOMMODATION STATISTICS	
Average Length of Stay (<i>nights</i>)		Cancun -Rooms	27,522
(<i>Cancun</i>)	4.6	Room Occupancy Rates	76.4%
(<i>Rivera Maya</i>) ¹	6.5	Cozumel - Rooms	3,738
Cancun		Room Occupancy Rates	41.9%
Tourist Arrivals by Purpose of Visit ^{VII}		Rivera Maya - Rooms ¹	22,624
➔ <i>Holiday</i>	93.0%	Room Occupancy Rates ¹	77.0%
➔ <i>Business</i>	5.0%		
➔ <i>Other</i>	2.0%		
TOURISM AND OTHER RELATED ECONOMIC STATISTICS			
Total Expenditure (<i>US\$ millions</i>) Cancun	\$1,483.1	Total Expenditure (<i>US\$ millions</i>) Cozumel	\$454.9

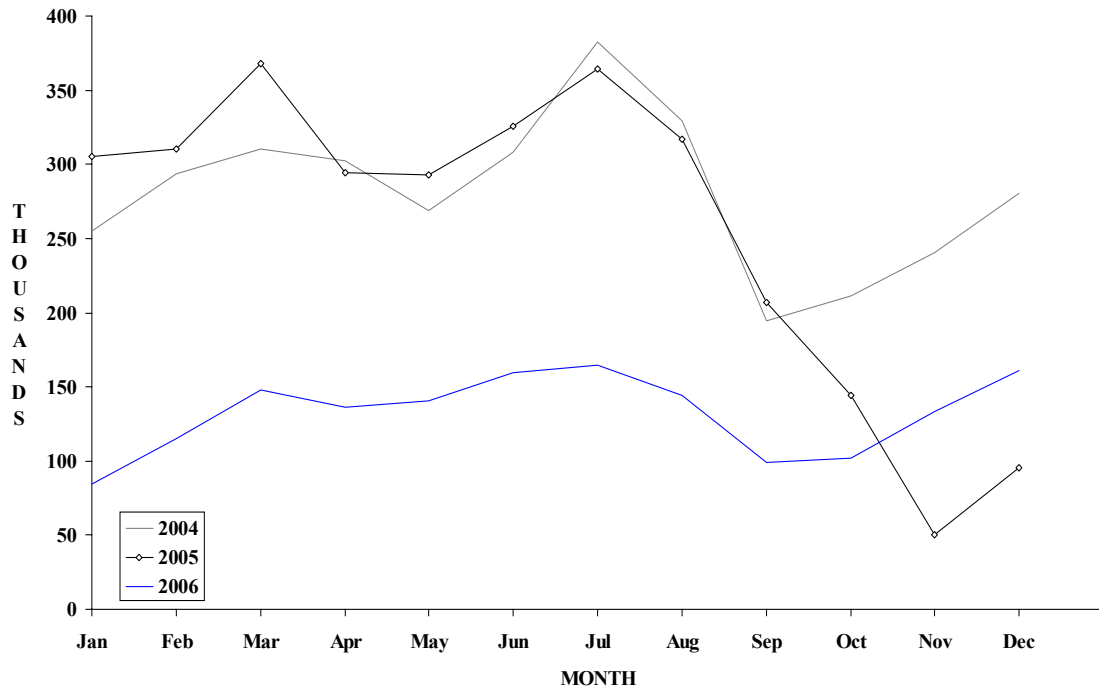
Mexico (Cancun)

TOURIST ARRIVALS BY MAIN MARKETS

2005



MONTHLY TOURIST ARRIVALS



MEXICAN CARIBBEAN - (CANCUN)

CANCUN - FOREIGN HOTEL GUEST BY COUNTRY OF ORIGIN

Country of Residence	2002	2003	2004	2005	% Share	
					2006	2006
United States	1479618	1590204	1750945	1528416		??
Canada	119411	139285	174447	188848		??
Europe	265175	255558	299943	303204		??
South America	62622	50169	56803	67667		??
Central America	10555	9757	11116	8543		??
Caribbean	8117	6176	7736	8127		??
Japan	14723	16380	19589	19806		??
Rest of the World	5224	9444	10783	9569		??
TOTAL	1965445	2076973	2331362	2134180	0	??

CANCUN - FOREIGN HOTEL GUEST BY MONTH

Month	2002	2003	2004	2005	% Change	
					2006	2006/05
January	156215	163389	187717	227720		-100.0
February	171073	182444	214571	230096		-100.0
March	229614	213061	235235	271063		-100.0
April	170418	181204	204430	215599		-100.0
May	163830	172325	189577	208760		-100.0
June	203360	203412	219535	235659		-100.0
July	193867	209545	230646	223630		-100.0
August	175542	197557	215937	209253		-100.0
September	103709	121219	129305	135594		-100.0
October	112172	124603	146009	96947		-100.0
November	135564	145849	168439	25586		-100.0
December	150081	162365	189961	54273		-100.0
TOTAL	1965445	2076973	2331362	2134180	0	-100.0

MEXICAN CARIBBEAN - (COZUMEL)

COZUMEL - TOTAL TOURIST ARRIVALS

	2002	2003	2004	2005	2006	% Share 2006
National Tourists	153386	60554	50009	120219		??
Foreign Tourists	205585	304233	368589	276515		??
TOTAL	358971	364787	418598	396734	0	??

COZUMEL - CRUISE PASSENGER ARRIVALS

Month	2002	2003	2004	2005	2006	% Change 2006/05
January	200450	277516	307610	303933	218804	-28.0
February	154963	238823	264970	288155	205696	-28.6
March	213242	277583	325866	353453	244013	-31.0
April	187374	256749	291170	276314	204914	-25.8
May	171193	183810	174610	186753	131228	-29.7
June	166168	175847	180505	200793	160426	-20.1
July	190061	185495	194186	188092	168620	-10.4
August	185584	196417	169837	194608	168579	-13.4
September	135559	158770	181530	150264	137620	-8.4
October	177870	218870	179036	85485	168781	97.4
November	159722	240207	271730	76532	243668	218.4
December	285504	298826	320989	214798	299694	39.5
TOTAL	2227690	2708913	2862039	2519180	2352043	-6.6
Cruise Ship Calls	795	1168	1305	1302	1124	

MEXICAN CARIBBEAN (RIVERA MAYA)

RIVERA MAYA - FOREIGN TOURIST ARRIVALS BY MAIN MARKET

Country of Residence	2002	2003	2004	2005	2006	% Share
						2006
United States	739808	817378	1026736	990983		??
Canada	301565	315851	331562	298460		??
Europe	553022	632096	776979	663814		??
South America	39624	24990	27222	22811		??
Rest Of the World	5071	4692	3669	5416		??
TOTAL	1639090	1795007	2166168	1981484	0	??

RIVERA MAYA - FOREIGN TOURIST ARRIVALS BY MONTH

Month	2002	2003	2004	2005	2006	% Change
						2006/05
January	119111	143549	174805	205873		-100.0
February	142874	151273	194206	193685		-100.0
March	176850	182753	198514	216421		-100.0
April	149231	148389	189949	202630		-100.0
May	120838	132038	181438	200316		-100.0
June	141641	143032	182923	197808		-100.0
July	145078	166818	201336	160650		-100.0
August	150567	166357	180033	144921		-100.0
September	115394	112387	144804	124607		-100.0
October	116021	123100	162278	107806		-100.0
November	133431	159144	174314	58501		-100.0
December	128054	166167	181568	168266		-100.0
TOTAL	1639090	1795007	2166168	1981484	0	-100.0

MEXICAN CARIBBEAN TOURIST ACCOMMODATION (Hotel Rooms)

Rooms	2002	2003	2004	2005	2006
Cancun	25829	26404	27522	11192	
Cozumel	4007	4010	3738	4205	
Rivera Maya	21014	22624	n.a	26980	

Source: Secretaria de Estatal de Turismo - Chetumal Quintana Roo Mexico, Cancun Hotel Association

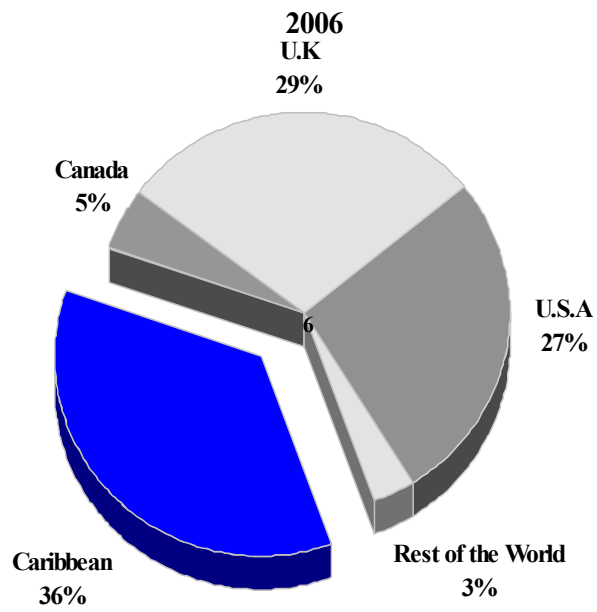
MONTSERRAT

TOURISM HIGHLIGHTS FOR 2006

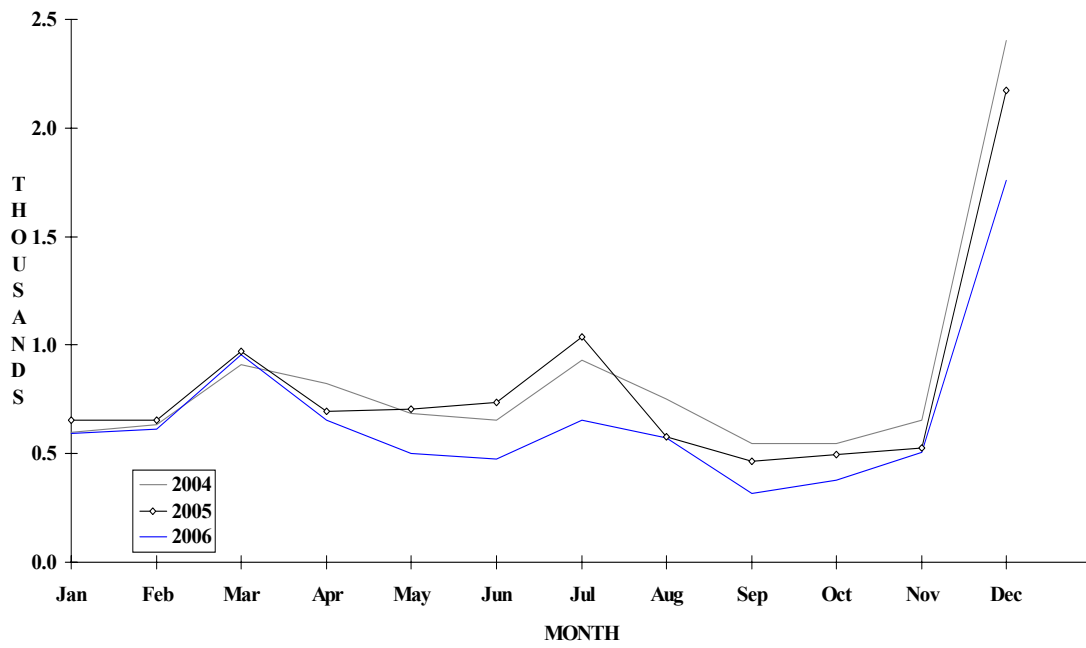
VISITOR ARRIVALS			
Tourist Arrivals ✈ ➔ <i>Summer</i> ➔ <i>Winter</i>	7,991 64.7% 35.3%	Total Rooms	344
VISITOR PROFILE			
Average Length of Stay (<i>nights</i>) Tourist Arrivals by Purpose of Visit ➔ <i>Holiday</i> ➔ <i>Business</i> ➔ <i>Other</i>	15.9 76.4% 17.4% 6.2%	Tourist Arrivals by Place of Stay ➔ <i>Hotels</i> ➔ <i>Apartment/Villas</i> ➔ <i>Private</i> ➔ <i>Other</i>	10.1% 6.9% 79.2% 3.8%
TOURISM AND OTHER RELATED ECONOMIC STATISTICS			
Total Expenditure (<i>US\$ millions</i>) Tourism Budget (<i>US\$ 'thousands</i>) ^{b1}	\$8.6 \$269	GDP at Factor Cost (<i>US\$ millions</i>) Consumer Price Index (<i>%ch. 2004/'03</i>) Hotel & Restaurant contribution to GDP	\$30.6 3.0% 0.9%
SOCIO-ECONOMIC STATISTICS			
Population (<i>thousand mid year 2004</i>)	4.7	Land Area (<i>square Kilometres</i>)	102

MONTSERRAT

TOURIST ARRIVALS BY MAIN MARKETS



MONTHLY TOURIST ARRIVALS



MONTSERRAT

TOURIST ARRIVALS BY COUNTRY OF RESIDENCE

Country of Residence	2002	2003	2004	2005	% Share	
					2006	2006
United States	1950	1541	2084	2034	2153	26.9
Canada	375	297	334	404	393	4.9
United Kingdom	2581	2269	3021	2968	2321	29.0
Other Europe	178	145	176	228	180	2.3
OECS	3282	2849	3051	2297	1540	19.3
Other Caribbean	1171	1224	1334	1690	1328	16.6
Rest of World	86	65	138	69	76	1.0
TOTAL	9623	8390	10138	9690	7991	100.0

MONTHLY TOURIST ARRIVALS

Month	2002	2003	2004	2005	% Change	
					2006	2006/05
January	838	527	597	656	592	-9.8
February	664	457	634	652	614	-5.8
March	976	768	910	970	958	-1.2
April	548	628	824	693	656	-5.3
May	645	462	683	706	501	-29.0
June	640	733	656	737	478	-35.1
July	972	712	932	1040	652	-37.3
August	770	706	753	580	573	-1.2
September	479	442	545	464	318	-31.5
October	369	542	547	495	380	-23.2
November	643	612	653	526	508	-3.4
December	2079	1801	2404	2171	1761	-18.9
TOTAL	9623	8390	10138	9690	7991	-17.5

¹ Source: Estimates given by the Statistical Department, Montserrat

TOURIST ACCOMMODATION (Rooms)

Type of Accommodation	2002	2003	2004	2005	2006
Hotels	40	n.a	40	n.a	n.a
Apartments	-	n.a	42	n.a	n.a
Villas	217	n.a	239	n.a	n.a
Other	-	n.a	23	n.a	n.a
TOTAL	257	n.a	344	n.a	n.a

Sources: Department of Tourism, Department of Statistics

PUERTO RICO

TOURISM HIGHLIGHTS FOR 2006

VISITOR ARRIVALS			
Tourist Arrivals ^e ('000) → ↳ <i>Summer</i> * ↳ <i>Winter</i> *	1,484,132	Cruise Passengers ↳ <i>Summer</i> ↳ <i>Winter</i> Cruise Calls	1,338,019
	60.1%		54.7%
	39.9%		45.3%
			562
ACCOMMODATION STATISTICS		VISITOR PROFILE	
Hotel Registrations	1,411,905	Average Length of Stay (<i>nights</i>)	2.5
Rooms ^{III}	12,753	Tourist Arrivals by Place of Stay	
Room Occupancy Rates	68.5%	↳ <i>Hotels & Guest House</i>	36.9%
		↳ <i>Private/Unregistered/Other</i>	63.1%
TOURISM AND OTHER RELATED SOCIO-ECONOMIC STATISTICS			
Total Expenditure (<i>US\$ millions</i>)	\$3,024.1	Tourism Budget (<i>US\$ '000's</i>) ^F	\$88,023
Hotel & Restaurant contribution to GDP	0.9%	GDP at Factor Cost (<i>US\$ millions</i>)	\$78,362.4
Consumer Price Index (% <i>ch. 2004/'03</i>)	11.9%	Land Area (<i>square Kilometres</i>)	8,874.7
		Population (<i>thousand mid year 2004</i>)	3,895.0

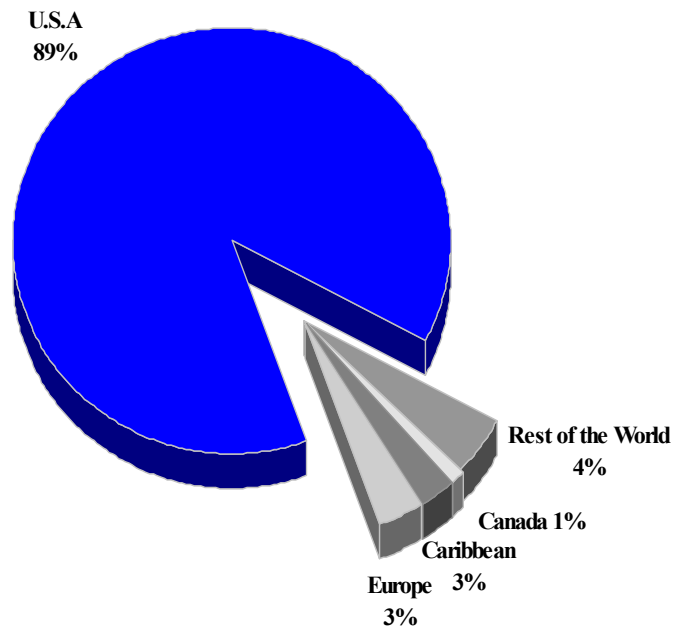
^F - fiscal estimate July 2003 - June 2004

* Seasonal distribution based on reported hotel registrations of non-residents only.

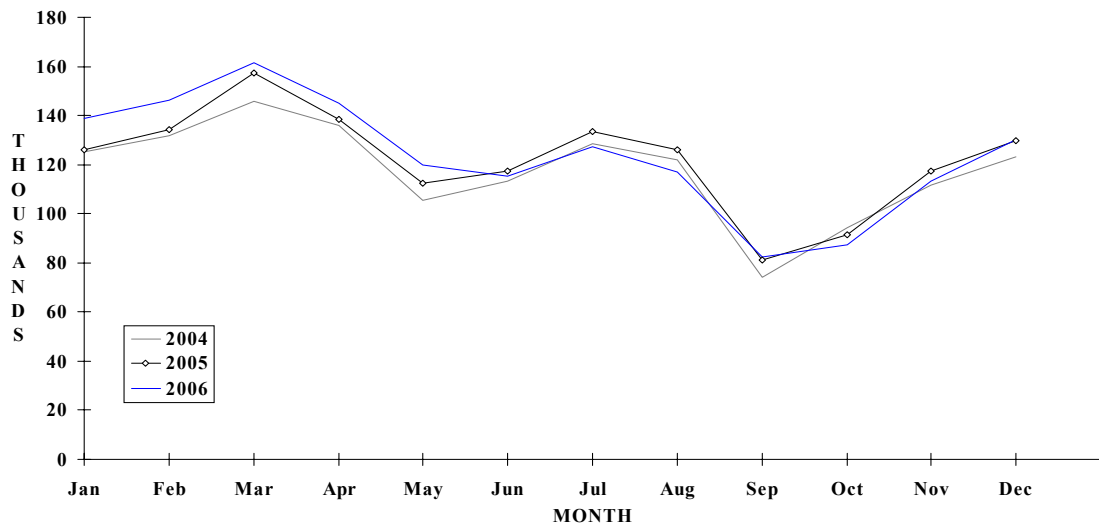
PUERTO RICO

HOTEL REGISTRATIONS BY MAIN MARKETS

2006



MONTHLY HOTEL REGISTRATIONS



VISITOR ARRIVALS BY CATEGORY (FISCAL YEAR - JULY TO JUNE)

	2002	2003	2004	2005	2006
Total Tourist	3087.1	3238.4	3541.0		
Same Day Arrivals	1277.0	1163.9	1348.2		
Total	4364.1	4402.3	4889.2	0.0	0.0

Source: The Puerto Rico Planning Board

**NON-RESIDENT HOTEL REGISTRATIONS* BY MAIN COUNTRY OF RESIDENCE
(Calendar Years)**

Country of Residence	2002	2003	2004	2005	2006	% Share 2006
United States	1108249	1148426	1230448	1282369	1312750	88.5
Canada	12230	13285	20882	18708	17174	1.2
Europe	28866	29607	36975	39337	41330	2.8
Caribbean	40794	46429	51935	51076	48105	3.2
Other Countries**	90011	84494	71599	73802	64773	4.4
TOTAL	1280150	1322241	1411839	1465292	1484132	100.0

** Includes hotels which did not report the origin of guests

MONTHLY HOTEL REGISTRATIONS * BY NON-RESIDENTS

Month	2002	2003	2004	2005	2006	% Change 2006/05
January	105638	122481	125354	126046	138906	10.2
February	113371	124007	131859	134437	146106	8.7
March	132651	136126	145920	157340	161639	2.7
April	124715	120742	136118	138402	145024	4.8
May	106764	101745	105419	112590	119695	6.3
June	101757	104255	113448	117472	115533	-1.7
July	109026	113994	128527	133565	127428	-4.6
August	108590	115075	121761	125841	117030	-7.0
September	73726	69882	74248	81177	82175	1.2
October	87838	90699	94348	91317	87299	-4.4
November	105703	107069	111505	117281	113128	-3.5
December	110371	116166	123332	129824	130169	0.3
TOTAL	1280150	1322241	1411839	1465292	1484132	1.3

* Reporting hotels only; Includes Paradores (County Inns) but excludes condominiums; also excludes airline crew members

CRUISE PASSENGER ARRIVALS

Month	2002					2006	
	2002	2003	2004	2005	2006	% Change 2006/05	
January	160021	120898	156025	175933	157538	-10.5	
February	141684	124298	153497	152035	144040	-5.3	
March	151647	144815	159024	156813	143550	-8.5	
April	117476	126909	132145	139447	160742	15.3	
May	56742	63159	88686	82733	73019	-11.7	
June	67576	75093	78966	57250	69566	21.5	
July	71232	67761	73078	68972	85718	24.3	
August	60940	73264	79358	60718	75528	24.4	
September	51075	62384	58417	52303	63200	20.8	
October	77302	80337	94951	100775	78796	-21.8	
November	101750	143142	150480	116647	119470	2.4	
December	146466	152932	165716	151453	166852	10.2	
TOTAL	1203911	1234992	1390343	1315079	1338019	1.7	

Other Cruise Statistics

	Fiscal Year*					
	2000/01	2001/02	2002/03	2003/04	2004/05	2005/06
Total Passengers*	1356619	1276301	1164199	1348163	1386211	
Cruise Ship calls	680	625	588	639	575	562

TOURIST ACCOMMODATION (Rooms)**

Type of Accommodation	CALENDAR YEAR				
	2002	2003	2004	2005	2006
Hotels	10157	10195	10363	9771	
Guest Houses	505	497	540	544	
Paradores	1061	1081	n.a	882	
Other	1098	1098	1013	2425	
TOTAL	12821	12871	11916	13622	0

* Fiscal year (July to June)

** Hotels endorsed by Puerto Rico Tourism Company only; as at end June

Source: Commonwealth of Puerto Rico Tourism Company.

TOURISM HIGHLIGHTS FOR 2006

VISITOR ARRIVALS			
Tourist Arrivals ➔	11,012	Same Day Visitors	11,941
➔ <i>Summer</i>	59.5%		
➔ <i>Winter</i>	40.5%		
ACCOMMODATION STATISTICS		SOCIO-ECONOMIC STATISTICS	
Rooms ⁱⁱ	n.a	Tourism Budget (US\$ '000) ^{vi}	\$274
		Land Area (square Kilometres)	13
		Population (thousand mid year 2002)	1.4

ST. EUSTATIUS

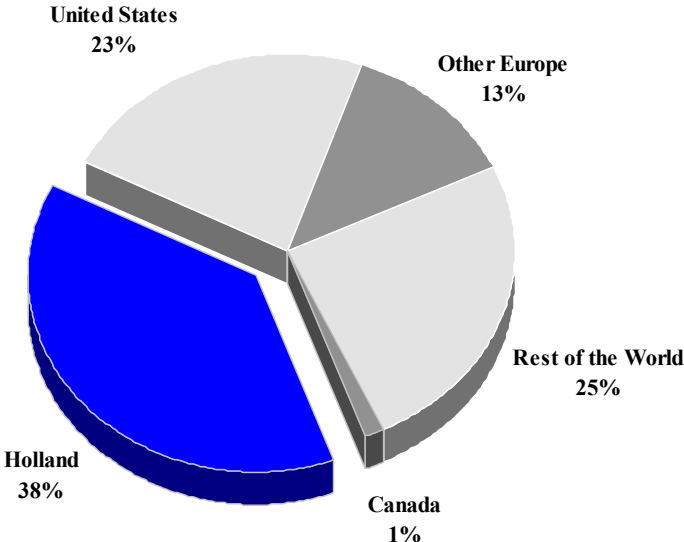
TOURISM HIGHLIGHTS FOR 2006

VISITOR ARRIVALS			
Tourist Arrivals ✈ ➡ <i>Summer</i> * ➡ <i>Winter</i> *	19,320 66.6% 33.4%	Sea Arrivals ➡ <i>Summer</i> ➡ <i>Winter</i> Yacht Arrivals	18,253 60.2% 39.8% 707
ACCOMMODATION STATISTICS		SOCIO-ECONOMIC STATISTICS	
Rooms ^v	62	Land Area (<i>square Kilometres</i>) Population (<i>thousand mid year 2004</i>)	21 2.5

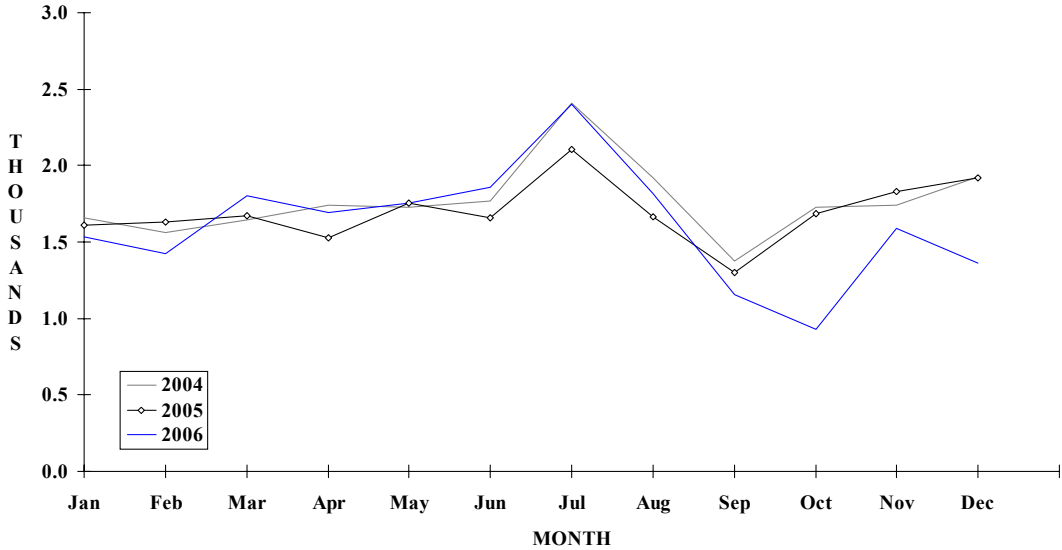
* Based on Total Air Arrivals

ST EUSTATIUS

**TOURIST ARRIVALS BY MAIN MARKETS
2006**



MONTHLY VISITOR ARRIVALS



* Total Visitor Arrivals includes Antilleans

ST EUSTATIUS

VISITOR AIR ARRIVALS BY NATIONALITY*

Nationality	2002	2003	2004	2005	% Share	
					2006	2006
United States	2371	2378	2463	2309	2206	23.0
Canada	192	184	211	194	138	1.4
Holland	3305	3930	4009	3904	3630	37.9
Other Europe	1295	1337	1516	1496	1222	12.7
Rest of the World	2618	2617	2877	2452	2389	24.9
TOTAL TOURISTS	9781	10446	11076	10355	9585	100.0
Antillean **	9771	9795	10121	10001	9735	
TOTAL AIR VISITORS	19552	20241	21197	20356	19320	

*Includes same-day visitors and returning residents

**Includes residents of St Eustatius

MONTHLY VISITOR AIR ARRIVALS

Month	2002	2003	2004	2005	% Change	
					2006	2006/05
January	1279	1565	1659	1609	1536	-4.5
February	1286	1440	1560	1628	1422	-12.7
March	1652	1513	1645	1672	1803	7.8
April	1418	1502	1740	1527	1693	10.9
May	1700	1746	1729	1756	1756	0.0
June	1540	1887	1770	1655	1855	12.1
July	2366	2263	2410	2106	2401	14.0
August	1838	1563	1917	1667	1817	9.0
September	1308	1417	1374	1302	1154	-11.4
October	1590	1709	1728	1688	927	-45.1
November	1613	1656	1738	1829	1592	-13.0
December	1962	1985	1927	1917	1364	-28.8
TOTAL	19552	20246	21197	20356	19320	-5.1

ST EUSTATIUS

MONTHLY VISITOR SEA ARRIVALS

Month	2002	2003	2004	2005	2006	% Change 2006/05
January	579	680	553	56	1827	3162.5
February	357	1269	726	1058	1652	56.1
March	1054	948	894	1414	1817	28.5
April	813	345	744	756	1962	159.5
May	494	239	491	771	1899	146.3
June	330	342	268	526	1326	152.1
July	532	79	354	652	1685	158.4
August	310	200	334	867	1013	16.8
September	269	221	115	790	1157	46.5
October	119	247	134	863	891	3.2
November	543	272	409	987	1145	16.0
December	936	506	1095	1142	1879	64.5
TOTAL	6336	5348	6117	9882	18253	84.7

Yacht Arrivals	749	663	610	708
----------------	-----	-----	-----	-----

TOURIST ACCOMMODATION (Rooms)

Rooms	2002	2003	2004	2005	2006
Total	n.a	n.a	n.a	n.a	n.a

Source: St. Eustatius Development Foundation