

JAMAICA

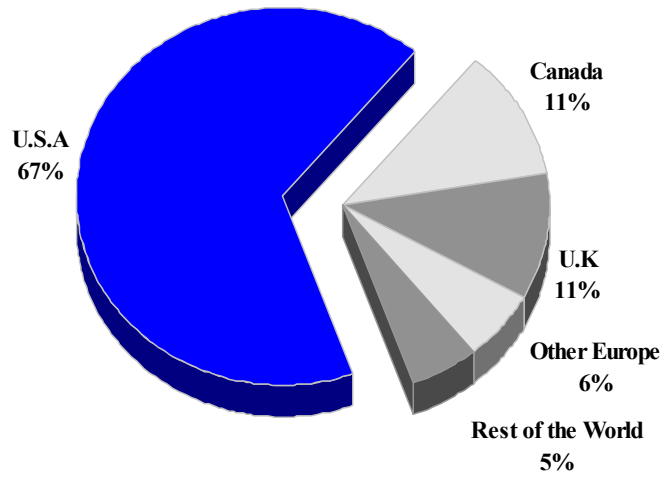
TOURISM HIGHLIGHTS FOR 2007

VISITOR ARRIVALS			
Tourist Arrivals ➔ ➔ <i>Summer</i> ➔ <i>Winter</i>	1,700,785 66.0% 34.0%	Cruise Passengers ➔ <i>Summer</i> ➔ <i>Winter</i> Cruise Calls	1,179,504 55.5% 44.5% 435
VISITOR PROFILE			
Average Length of Stay (<i>nights</i>) Tourist Arrivals by Purpose of Visit ➔ <i>Holiday</i> ➔ <i>Business</i> ➔ <i>Other</i>	9.6 85.9% 6.1% 8.0%	Tourist Arrivals by Place of Stay ➔ <i>Hotels</i> ➔ <i>Guest Houses/Apartments</i> ➔ <i>Private</i> ➔ <i>Other</i>	63.9% 4.2% 30.3% 1.6%
TOURISM AND OTHER RELATED ECONOMIC STATISTICS			
Total Expenditure (<i>US\$ millions</i>) Tourism Budget (<i>US\$ thousands</i>) *	\$1,910.0 \$29,499	GDP at Factor Cost (<i>US\$ millions</i>) ⁱⁱⁱ Hotel and Restaurant contribution to GDP Consumer Price Index (<i>%ch. 2007/'06</i>)	\$7,976.5 n.a 9.3
ACCOMMODATION STATISTICS		SOCIO-ECONOMIC STATISTICS	
Rooms Room Occupancy Rates	27,711 63.2%	Land Area (<i>square Kilometres</i>) Population (<i>thousand mid year 2006</i>)	11,424 2,667.3

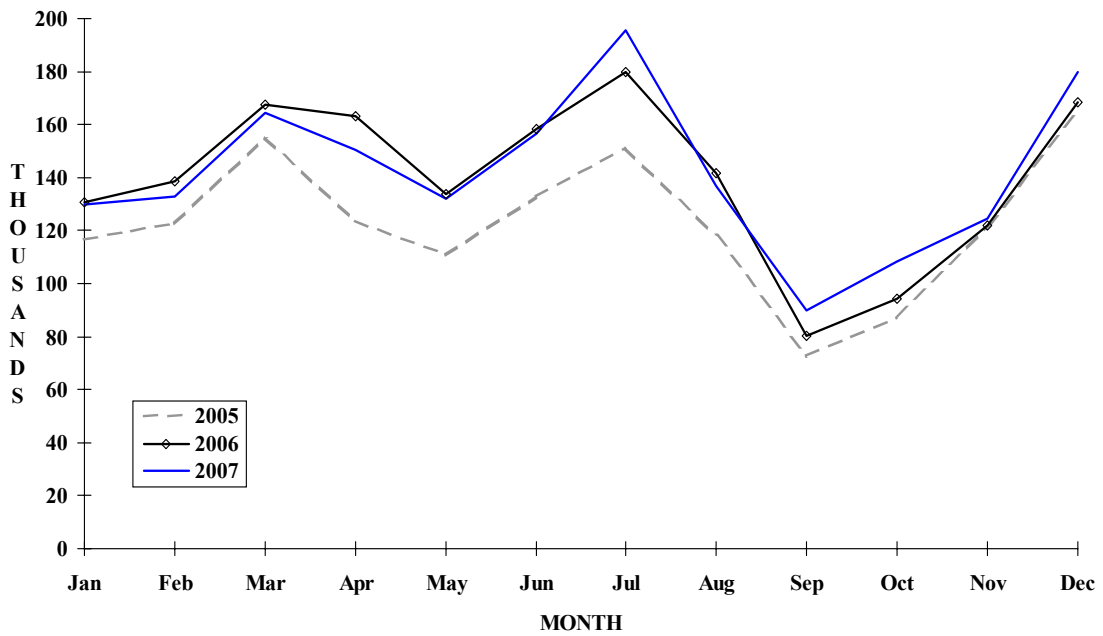
* Actual and fiscal (April-March) 2003/2004

JAMAICA

**TOURIST ARRIVALS BY MAIN MARKETS
2007**



MONTHLY TOURIST ARRIVALS



TOURIST ARRIVALS BY COUNTRY OF RESIDENCE

Country of Residence	2003	2004	2005	2006	2007	% Share 2007
U.S.A	968315	996131	1058317	1190721	1132532	66.6
Canada	95265	105623	116862	153569	190650	11.2
United Kingdom	149714	161606	149773	175363	185657	10.9
Other Europe	68786	80319	84106	80711	103237	6.1
Caribbean	48041	52036	50759	56589	63491	3.7
Other Americas	8058	8050	2522	10460	11645	0.7
Rest of World	12106	11021	16324	11492	13573	0.8
TOTAL	1350285	1414786	1478663	1678905	1700785	100.0

MONTHLY TOURIST ARRIVALS

Month	2003	2004	2005	2006	2007	% Change 2007/06
January	101306	109350	116844	130695	129756	-0.7
February	111458	120129	123022	138428	132949	-4.0
March	129485	136606	155103	167439	164547	-1.7
April	111974	131101	123578	163272	150561	-7.8
May	102021	111759	110821	133902	132044	-1.4
June	122071	133393	132710	158425	156450	-1.2
July	144039	160231	151289	180015	195409	8.6
August	128219	129526	117898	141631	136660	-3.5
September	76535	64940	72926	80397	89704	11.6
October	86639	84802	87467	94351	108205	14.7
November	98048	97084	121740	121916	124474	2.1
December	138490	135865	165265	168434	180026	6.9
TOTAL	1350285	1414786	1478663	1678905	1700785	1.3

CRUISE PASSENGER ARRIVALS

Month	2003	2004	2005	2006	% Change	
					2007	2007/06
January	118834	124650	111841	134279	143728	7.0
February	116451	115351	112261	118051	123130	4.3
March	128758	129266	150871	153972	144764	-6.0
April	108009	109744	98654	109074	113524	4.1
May	64350	64424	74505	83311	93151	11.8
June	64812	76427	73246	88087	71545	-18.8
July	84154	68203	59881	85935	76231	-11.3
August	63121	69229	75555	98918	71689	-27.5
September	68058	48301	69463	79243	60682	-23.4
October	95910	61723	68463	99103	63438	-36.0
November	100522	98704	110016	131136	99353	-24.2
December	119617	133751	131087	155885	118269	-24.1
TOTAL	1132596	1099773	1135843	1336994	1179504	-11.8

Number of Calls	502	482	508	563	435
-----------------	-----	-----	-----	-----	-----

TOURIST ACCOMMODATION (Rooms)

Type of Accommodation	2003	2004	2005	2006	2007
Hotels	16986	17533	18817	19550	20237
Guest Houses	2774	2739	2771	2641	2983
Resort Cottages	3798	3625	3511	3571	3589
Apartment Houses	1067	1050	940	913	902
TOTAL	24625	24947	26039	26675	27711

Area

Kingston*	2141	2077	2085	2108	2327
Montego Bay	8019	7944	7950	7922	8315
Negril	5851	6414	6426	6449	6469
Ocho Rios	6777	6712	7406	7986	8224
Port Antonio	991	986	967	979	995
Mandeville\South Coast	846	814	1205	1231	1381

*Includes the Parish of St. Andrew

Source: Ministry of Tourism - Jamaica

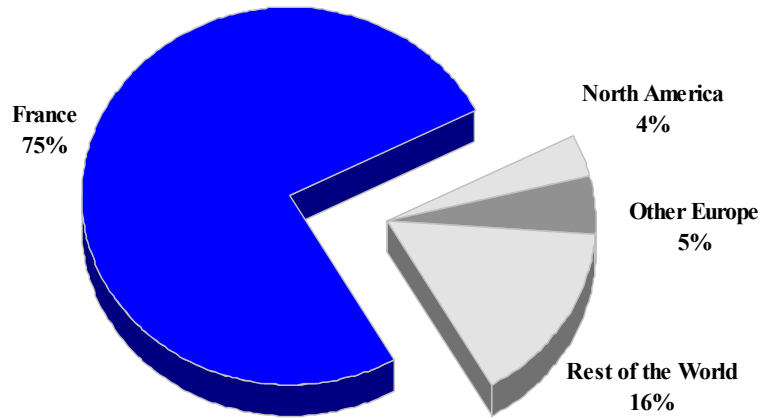
MARTINIQUE

TOURISM HIGHLIGHTS FOR 2007

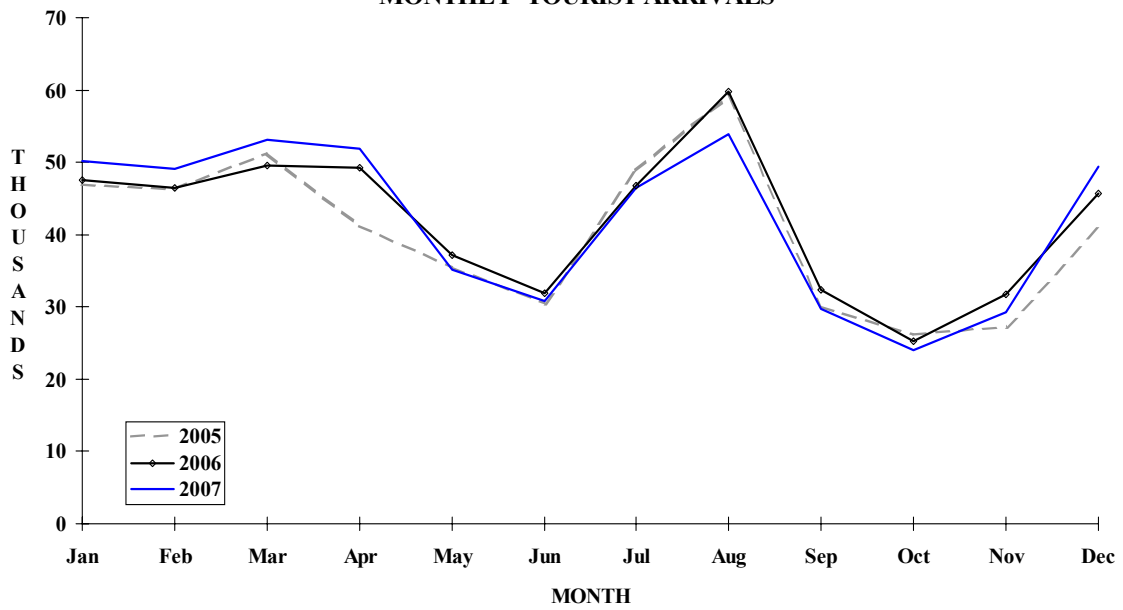
VISITOR ARRIVALS			
Tourist Arrivals ✈ ➔ <i>Summer</i> ➔ <i>Winter</i>	503,107 59.4% 40.6%	Cruise Passengers ➔ <i>Summer</i> ➔ <i>Winter</i> Cruise Ship Calls ^I	71,683 34.7% 65.3% 137
VISITOR PROFILE			
Average Length of Stay (<i>nights</i>) ^I Tourist Arrivals by Purpose of Visit ^{III} ➔ <i>Holiday</i> ➔ <i>Business</i> ➔ <i>Other</i>	13.5 84.3% 12.4% 3.3%	Tourist Arrivals by Place of Stay ^{III} ➔ <i>Hotels</i> ➔ <i>Guest Houses/Apartments</i> ➔ <i>Private</i> ➔ <i>Others</i>	36.6% 26.9% 26.3% 10.2%
TOURISM AND OTHER RELATED ECONOMIC STATISTICS			
Total Expenditure (<i>US\$ millions</i>)	\$305.2	Tourism Budget (<i>US\$ '000</i>) ^{XI}	\$7,540
ACCOMMODATION STATISTICS		SOCIO-ECONOMIC STATISTICS	
Rooms ^I Room Occupancy Rates ^I	8,261 60.5%	Land Area (<i>square Kilometres</i>) Population (<i>thousand mid year 2006</i>)	1,060 400.0

MARTINIQUE

TOURIST ARRIVALS BY MAIN MARKETS 2007



MONTHLY TOURIST ARRIVALS



TOURIST ARRIVALS BY COUNTRY OF RESIDENCE

Country of Residence	2003	2004	2005	2006	% Share	
					2007	2007
United States	2557	3468	4984	5239	12366	2.5
Canada	2584	3008	4569	4772	5356	1.1
France	357726	373678	369705	395515	379928	75.8
Other Europe	22198	22461	29378	26938	25304	5.0
D.O.M. *	51288	54050	48612	51608	75258}	15.0
Other C'bean	12826	10446	18312	15079		
Other Countries	3981	3779	8567	4324	3280	0.7
TOTAL	453160	470890	484127	503475	501492	100.0

*French overseas departments and territories (mainly Guadeloupe)

MONTHLY TOURIST ARRIVALS*

Month	2003	2004	2005	2006	% Change	
					2007	2007/06
January	50019	46320	46904	47576	50200	5.5
February	42326	43244	46296	46387	49098	5.8
March	51607	45712	51239	49514	53144	7.3
April	47090	47241	41255	49252	51824	5.2
May	31809	33573	35475	37203	35200	-5.4
June	27819	27771	30541	31948	30887	-3.3
July	40380	46439	48956	46818	46452	-0.8
August	52356	58245	59224	59806	53912	-9.9
September	25883	28784	29988	32304	29723	-8.0
October	22631	25456	26124	25215	24005	-4.8
November	25451	28547	27271	31719	29275	-7.7
December	35789	39558	40854	45733	49387	8.0
TOTAL	453160	470890	484127	503475	503107	-0.1

MARTINIQUE

CRUISE PASSENGER ARRIVALS

Month	2003	2004	2005	2006	% Change	
					2007	2007/06
January	31771	26965	16176	16329	10172	-37.7
February	31301	23027	12640	12754	11582	-9.2
March	29995	28573	17814	16570	14747	-11.0
April	30354	13502	11182	10243	10280	0.4
May	9095	4160	1382	1026	0	-
June	12748	4444	0	0	0	-
July	15154	2896	0	0	0	-
August	11916	2654	0	0	0	-
September	14166	1995	0	0	0	-
October	15849	4528	1981	4529	0	-
November	23953	19644	9177	13397	10319	-23.0
December	42240	27028	22711	21241	14583	-31.3
TOTAL	268542	159416	93063	96089	71683	-25.4
Cruise Calls	218	220	128	137	n.a	

TOURIST ACCOMMODATION (Rooms)

Rooms	2003	2004	2005	2006	2007
Total	8298	n.a	n.a	8261	n.a

Source: Agence Regionale de Developpment Touristique de la Martinique (ARDTM)

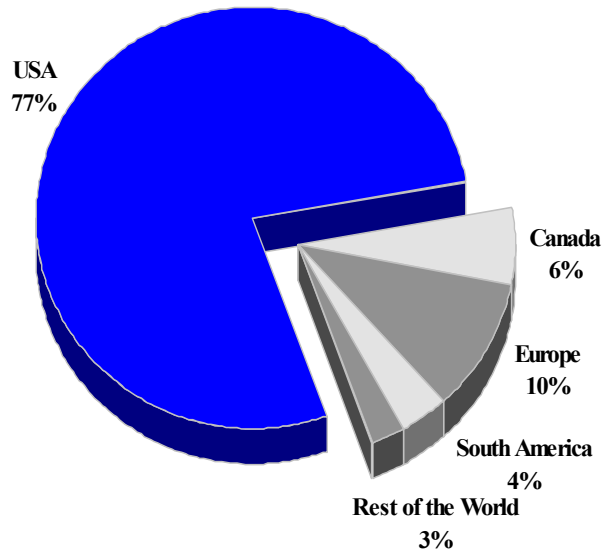
**THE MEXICAN CARIBBEAN
(CANCUN, COZUMEL RIVERA MAYA)**

TOURISM HIGHLIGHTS FOR 2007

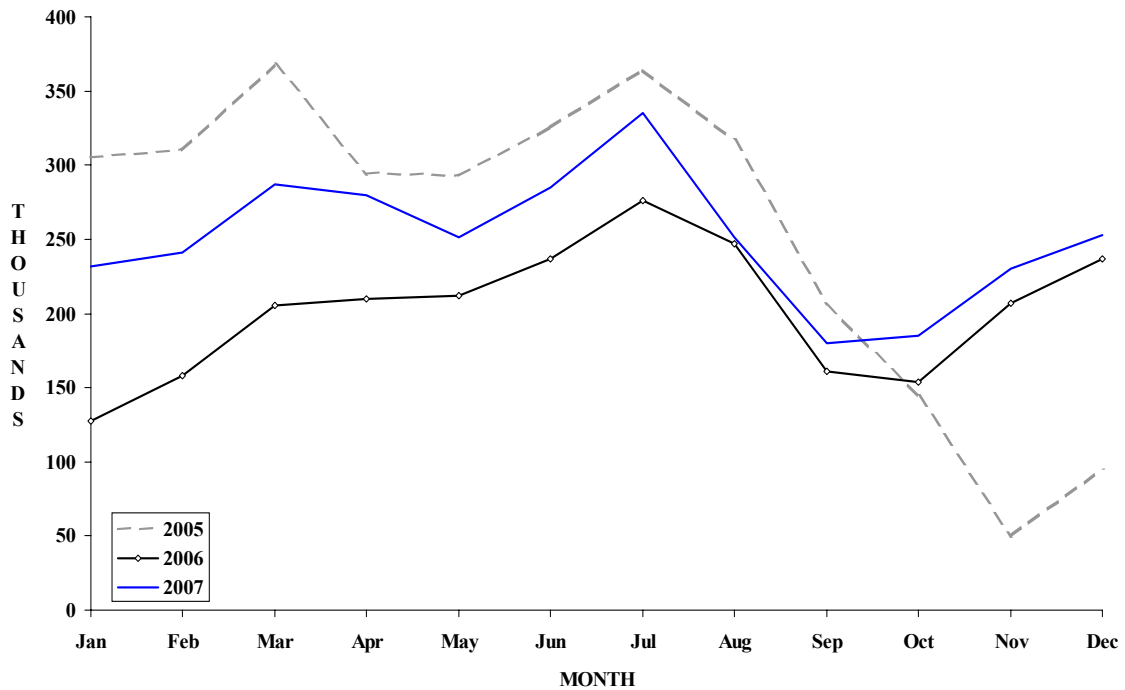
VISITOR ARRIVALS			
Cancun - Tourist Arrivals ✈	2,022,302	Cozumel - Cruise Passengers	2,488,190
➔ <i>Summer</i>	62.6%	➔ <i>Summer</i>	55.2%
➔ <i>Winter</i>	37.4%	➔ <i>Winter</i>	44.8%
Cozumel - Tourist Arrivals ✈ ^{II}	396,734	Cruise Ship Calls	1,052
Rivera Maya - Tourist Arrivals ✈ ^{II}	1,981,484		
VISITOR PROFILE		ACCOMMODATION STATISTICS	
Average Length of Stay (<i>nights</i>)		Cancun -Rooms	27,075
(<i>Cancun</i>)	4.7	Room Occupancy Rates	71.1%
(<i>Rivera Maya</i>) ^{II}	6.5	Cozumel - Rooms ^{II}	4,205
Cancun		Room Occupancy Rates ^{II}	41.9%
Tourist Arrivals by Purpose of Visit ^{IX}		Rivera Maya - Rooms ^{II}	22,624
➔ <i>Holiday</i>	93.0%	Room Occupancy Rates ^{II}	77.0%
➔ <i>Business</i>	5.0%		
➔ <i>Other</i>	2.0%		
TOURISM AND OTHER RELATED ECONOMIC STATISTICS			
Total Expenditure (<i>US\$ millions</i>) Cancun	\$2,204.6	Total Expenditure (<i>US\$ millions</i>) ^{III} Cozumel	\$454.9

Mexico (Cancun)

**TOURIST ARRIVALS BY MAIN MARKETS
2007**



MONTHLY TOURIST ARRIVALS



MEXICAN CARIBBEAN - (CANCUN)

CANCUN - FOREIGN HOTEL GUEST BY COUNTRY OF ORIGIN

Country of Residence	2003	2004	2005	2006	% Share	
					2007	2007
United States	1590204	1750945	1528416	1265080	1571703	77.7
Canada	139285	174447	188848	79878	117081	5.8
Europe	255558	299943	303204	167249	209407	10.4
South America	50169	56803	67667	36861	73217	3.6
Central America	9757	11116	8543	7831	11062	0.5
Caribbean	6176	7736	8127	6032	9125	0.5
Japan	16380	19589	19806	16176	20132	1.0
Rest of the World	9444	10783	9569	7835	10575	0.5
TOTAL	2076973	2331362	2134180	1586942	2022302	100.0

CANCUN - FOREIGN HOTEL GUEST BY MONTH

Month	2003	2004	2005	2006	% Change	
					2007	2007/06
January	163389	187717	227720	84748	174376	105.8
February	182444	214571	230096	114755	181493	58.2
March	213061	235235	271063	147837	207356	40.3
April	181204	204430	215599	135901	193710	42.5
May	172325	189577	208760	140496	166708	18.7
June	203412	219535	235659	159313	194930	22.4
July	209545	230646	223630	164636	205297	24.7
August	197557	215937	209253	144530	166867	15.5
September	121219	129305	135594	98852	105541	6.8
October	124603	146009	96947	101742	115041	13.1
November	145849	168439	25586	133023	143483	7.9
December	162365	189961	54273	161109	167500	4.0
TOTAL	2076973	2331362	2134180	1586942	2022302	27.4

MEXICAN CARIBBEAN - (COZUMEL)

COZUMEL - TOTAL TOURIST ARRIVALS

	2001	2002	2003	2004	2005	% Share 2005
National Tourists	240499	153386	60554	50009	120219	30.3
Foreign Tourists	215122	205585	304233	368589	276515	69.7
TOTAL	455621	358971	364787	418598	396734	100.0

COZUMEL - CRUISE PASSENGER ARRIVALS

Month	2003	2004	2005	2006	2007	% Change 2007/06
January	277516	307610	303933	218804	295169	34.9
February	238823	264970	288155	205696	268613	30.6
March	277583	325866	353453	244013	310292	27.2
April	256749	291170	276314	204914	241707	18.0
May	183810	174610	186753	131228	144911	10.4
June	175847	180505	200793	160426	167465	4.4
July	185495	194186	188092	168620	153098	-9.2
August	196417	169837	194608	168579	151054	-10.4
September	158770	181530	150264	137620	122047	-11.3
October	218870	179036	85485	168781	159587	-5.4
November	240207	271730	76532	243668	208783	-14.3
December	298826	320989	214798	299694	265464	-11.4
TOTAL	2708913	2862039	2519180	2352043	2488190	5.8
Cruise Ship Calls	1305	1302	1124	990	1052	

MEXICAN CARIBBEAN (RIVERA MAYA)

RIVERA MAYA - FOREIGN TOURIST ARRIVALS BY MAIN MARKET

Country of Residence	2001	2002	2003	2004	2005	% Share 2005
United States	603414	739808	817378	1026736	990983	50.0
Canada	220128	301565	315851	331562	298460	15.1
Europe	516776	553022	632096	776979	663814	33.5
South America	61585	39624	24990	27222	22811	1.2
Rest Of the World	3830	5071	4692	3669	5416	0.3
TOTAL	1405733	1639090	1795007	2166168	1981484	100.0

RIVERA MAYA - FOREIGN TOURIST ARRIVALS BY MONTH

Month	2001	2002	2003	2004	2005	% Change 2005/04
January	124325	119111	143549	174805	205873	17.8
February	122289	142874	151273	194206	193685	-0.3
March	128681	176850	182753	198514	216421	9.0
April	127602	149231	148389	189949	202630	6.7
May	116139	120838	132038	181438	200316	10.4
June	125181	141641	143032	182923	197808	8.1
July	147449	145078	166818	201336	160650	-20.2
August	125474	150567	166357	180033	144921	-19.5
September	85431	115394	112387	144804	124607	-13.9
October	76557	116021	123100	162278	107806	-33.6
November	102349	133431	159144	174314	58501	-66.4
December	124256	128054	166167	181568	168266	-7.3
TOTAL	1405733	1639090	1795007	2166168	1981484	-8.5

MEXICAN CARIBBEAN TOURIST ACCOMMODATION (Hotel Rooms)

Rooms	2001	2002	2003	2004	2005
Cancun	26194	25829	26404	27522	11192
Cozumel	4826	4007	4010	3738	4205
Rivera Maya	18731	21014	22624	n.a	26980

Source: Secretaria de Estatal de Turismo - Chetumal Quintana Roo Mexico, Cancun Hotel Association

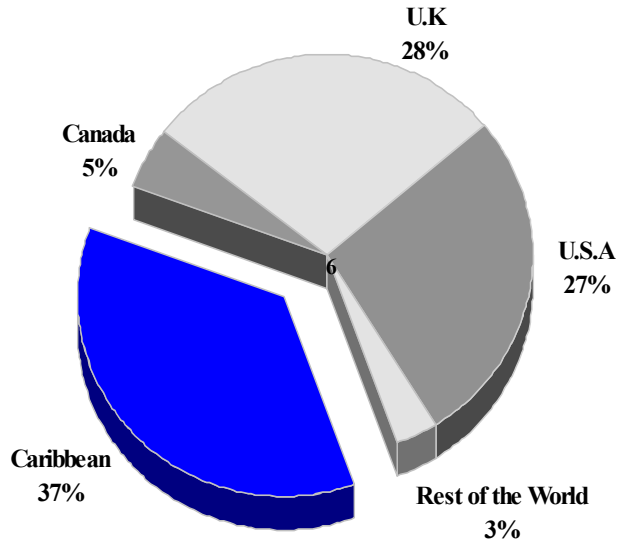
MONTSERRAT

TOURISM HIGHLIGHTS FOR 2007

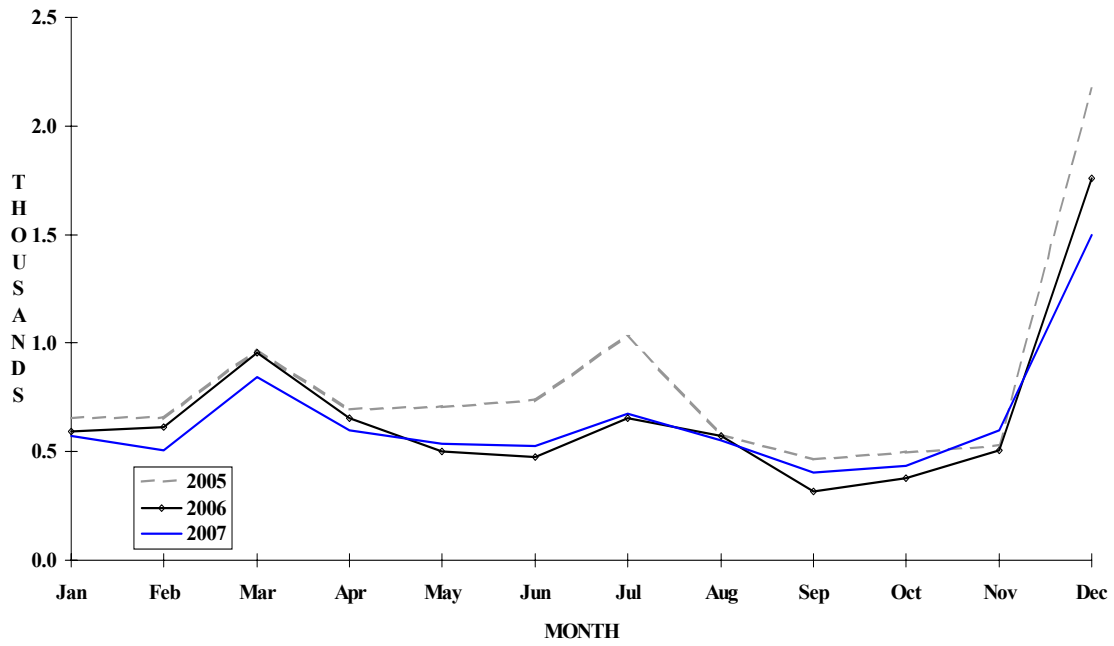
VISITOR ARRIVALS			
Tourist Arrivals ➔ ➔ <i>Summer</i> ➔ <i>Winter</i>	7,746 67.4% 32.6%	Total Rooms ^{III}	344
VISITOR PROFILE			
Average Length of Stay (<i>nights</i>) Tourist Arrivals by Purpose of Visit ➔ <i>Holiday</i> ➔ <i>Business</i> ➔ <i>Other</i>	15.9 79.6% 19.7% 0.7%	Tourist Arrivals by Place of Stay ➔ <i>Hotels</i> ➔ <i>Apartment/Villas</i> ➔ <i>Private</i> ➔ <i>Other</i>	11.6% 19.5% 66.2% 2.7%
TOURISM AND OTHER RELATED ECONOMIC STATISTICS			
Total Expenditure (<i>US\$ millions</i>) ^I Tourism Budget (<i>US\$ 'thousands</i>) ^{b,IV}	\$7.7 \$269	GDP at Factor Cost (<i>US\$ millions</i>) ^{II} Consumer Price Index (<i>%ch. 2004/'03</i>) ^{IV} Hotel & Restaurant contribution to GDP	\$32.6 3.0% 0.8%
SOCIO-ECONOMIC STATISTICS			
Population (<i>thousand mid year 2006</i>)	5.0	Land Area (<i>square Kilometres</i>)	102

MONTSERRAT

**TOURIST ARRIVALS BY MAIN MARKETS
2007**



MONTHLY TOURIST ARRIVALS



MONTSERRAT

TOURIST ARRIVALS BY COUNTRY OF RESIDENCE

Country of Residence	2003	2004	2005	2006	% Share	
					2007	2007
United States	1541	2084	2034	2153	2109	27.2
Canada	297	334	404	393	388	5.0
United Kingdom	2269	3021	2968	2321	2190	28.3
Other Europe	145	176	228	180	176	2.3
OECS	2849	3051	2297	1540	1419	18.3
Other Caribbean	1224	1334	1690	1328	1377	17.8
Rest of World	65	138	69	76	87	1.1
TOTAL	8390	10138	9690	7991	7746	100.0

MONTHLY TOURIST ARRIVALS

Month	2003	2004	2005	2006	% Change	
					2007	2007/06
January	527	597	656	592	575	-2.9
February	457	634	652	614	506	-17.6
March	768	910	970	958	844	-11.9
April	628	824	693	656	597	-9.0
May	462	683	706	501	537	7.2
June	733	656	737	478	528	10.5
July	712	932	1040	652	673	3.2
August	706	753	580	573	550	-4.0
September	442	545	464	318	406	27.7
October	542	547	495	380	435	14.5
November	612	653	526	508	596	17.3
December	1801	2404	2171	1761	1498	-14.9
TOTAL	8390	10138	9690	7991	7745	-3.1

¹ Source: Estimates given by the Statistical Department, Montserrat

TOURIST ACCOMMODATION (Rooms)

Type of Accommodation	2003	2004	2005	2006	2007
Hotels	n.a	40	n.a	n.a	n.a
Apartments	n.a	42	n.a	n.a	n.a
Villas	n.a	239	n.a	n.a	n.a
Other	n.a	23	n.a	n.a	n.a
TOTAL	n.a	344	n.a	n.a	n.a

Sources: Department of Tourism, Department of Statistics

PUERTO RICO

TOURISM HIGHLIGHTS FOR 2007

VISITOR ARRIVALS			
Tourist Arrivals ^e ('000) ➔	3,755,782	Cruise Passengers	1,437,239
➔ <i>Summer</i> *	60.3%	➔ <i>Summer</i>	57.0%
➔ <i>Winter</i> *	39.7%	➔ <i>Winter</i>	43.0%
		Cruise Calls	563
ACCOMMODATION STATISTICS		VISITOR PROFILE	
Hotel Registrations	1,356,470	Average Length of Stay (<i>nights</i>) ^l	2.6
Rooms ^v	12,788	Tourist Arrivals by Place of Stay¹¹¹	
Room Occupancy Rates ^l	68.7%	➔ <i>Hotels & Guest House</i>	36.9%
		➔ <i>Private/Unregistered/Other</i>	63.1%
TOURISM AND OTHER RELATED SOCIO-ECONOMIC STATISTICS			
Total Expenditure (<i>US\$ millions</i>)	\$3,413.9	Tourism Budget (<i>US\$ '000's</i>) ^{11 F}	\$104,088
Hotel & Restaurant contribution to GDP ^v	0.9%	GDP at Factor Cost (<i>US\$ millions</i>) ^l	\$86,942.6
Consumer Price Index (% ch. 2006/'05)	14.7%	Land Area (<i>square Kilometres</i>)	8,874.7
		Population (<i>thousand mid year 2006</i>)	3,927.8

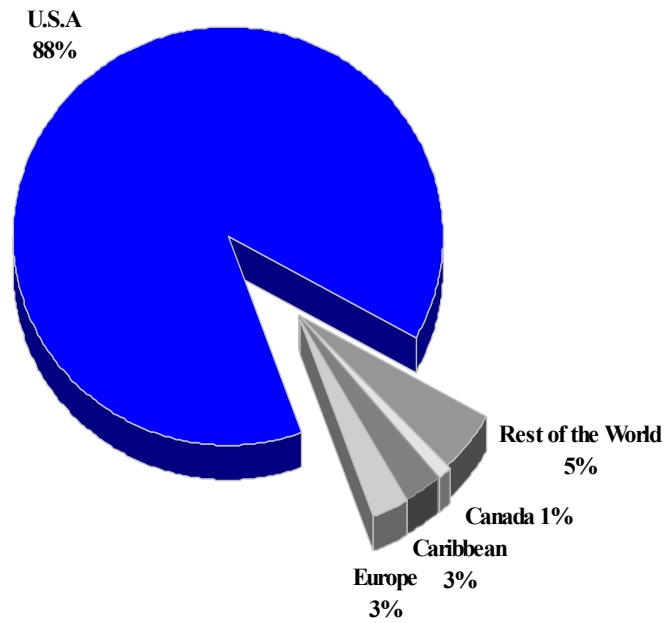
^F - fiscal estimate July 2003 - June 2004

* Seasonal distribution based on reported hotel registrations of non-residents only.

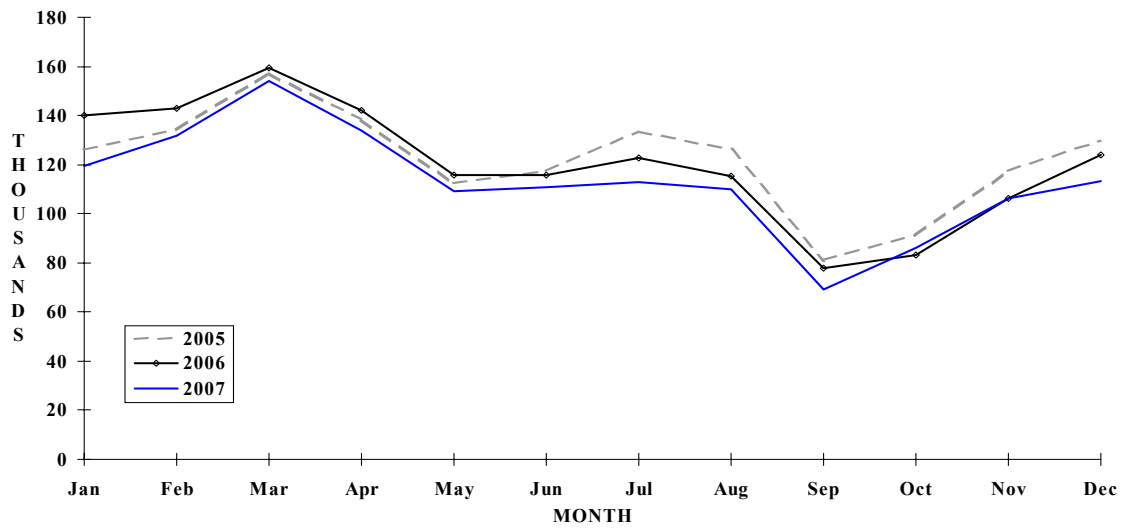
PUERTO RICO

HOTEL REGISTRATIONS BY MAIN MARKETS

2007



MONTHLY HOTEL REGISTRATIONS



VISITOR ARRIVALS BY CATEGORY (FISCAL YEAR - JULY TO JUNE)

	2003	2004	2005	2006	2007
Total Tourist	3238.4	3541.0	3685.9	3722.0	3687.0
Same Day Arrivals	1163.9	1348.2	1386.9	1300.1	1375.4
Total	4402.3	4889.2	5072.8	5022.1	5062.4

Source: The Puerto Rico Planning Board

**NON-RESIDENT HOTEL REGISTRATIONS* BY MAIN COUNTRY OF RESIDENCE
(Calendar Years)**

Country of Residence	2003	2004	2005	2006	2007	% Share 2007
United States	1148426	1230448	1282369	1278199	1201757	88.6
Canada	13285	20882	18708	17023	16746	1.2
Europe	29607	36975	39337	40640	35691	2.6
Caribbean	46429	51935	51076	47732	39926	2.9
Other Countries**	84494	71599	73802	62590	62350	4.6
TOTAL	1322241	1411839	1465292	1446184	1356470	100.0

** Includes hotels which did not report the origin of guests

MONTHLY HOTEL REGISTRATIONS * BY NON-RESIDENTS

Month	2003	2004	2005	2006	2007	% Change 2007/06
January	122481	125354	126046	140070	119525	-14.7
February	124007	131859	134437	143096	131713	-8.0
March	136126	145920	157340	159383	153939	-3.4
April	120742	136118	138402	143265	133673	-6.7
May	101745	105419	112590	115643	109229	-5.5
June	104255	113448	117472	115816	110707	-4.4
July	113994	128527	133565	122661	112736	-8.1
August	115075	121761	125841	115401	109902	-4.8
September	69882	74248	81177	77684	69396	-10.7
October	90699	94348	91317	83178	86258	3.7
November	107069	111505	117281	106101	106082	0.0
December	116166	123332	129824	123886	113310	-8.5
TOTAL	1322241	1411839	1465292	1446184	1356470	-6.2

* Reporting hotels only; Includes Paradores (County Inns) but excludes condominiums; also excludes airline crew members

CRUISE PASSENGER ARRIVALS

Month	2003					2007	
	2003	2004	2005	2006	2007	% Change 2007/06	
January	120898	156025	175933	157538	173555	10.2	
February	124298	153497	152035	144040	159620	10.8	
March	144815	159024	156813	143550	157056	9.4	
April	126909	132145	139447	160742	127727	-20.5	
May	63159	88686	82733	73019	83783	14.7	
June	75093	78966	57250	69566	83444	19.9	
July	67761	73078	68972	85718	95085	10.9	
August	73264	79358	60718	75528	84467	11.8	
September	62384	58417	52303	63200	75616	19.6	
October	80337	94951	100775	78796	85443	8.4	
November	143142	150480	116647	119470	126081	5.5	
December	152932	165716	151453	166852	185362	11.1	
TOTAL	1234992	1390343	1315079	1338019	1437239	7.4	

Other Cruise Statistics

	Fiscal Year*					
	2001/02	2002/03	2003/04	2004/05	2005/06	2006/07
Total Passengers*	1276301	1639379	1348163	1386211	1299323	1374749
Cruise Ship calls	588	588	642	575	562	563

TOURIST ACCOMMODATION (Rooms)**

Type of Accommodation	CALENDAR YEAR				
	2003	2004	2005	2006	2007
Hotels	10025	10223	10900	11017	11017
Guest Houses	522	532	536	567	567
Paradores	1081	1013	1026	866	866
Other	1098	874	874	1031	954
TOTAL	12726	12642	13336	13481	13404

* Fiscal year (July to June)

** Hotels endorsed by Puerto Rico Tourism Company only; as at end June

Source: Commonwealth of Puerto Rico Tourism Company.

SABA

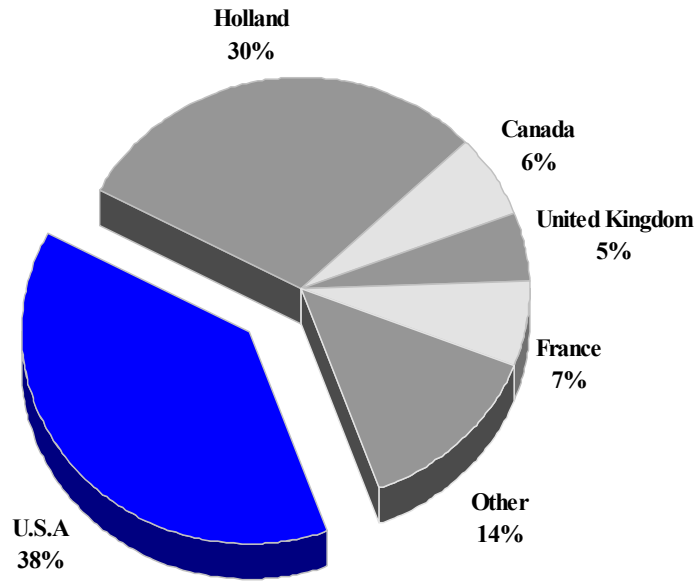
TOURISM HIGHLIGHTS FOR 2007

VISITOR ARRIVALS			
Tourist Arrivals ✈ ➔ <i>Summer</i> ➔ <i>Winter</i>	11,673 61.6% 38.4%	Same Day Visitors	9,953
ACCOMMODATION STATISTICS	SOCIO-ECONOMIC STATISTICS		
Rooms ⁱⁱ	n.a	Tourism Budget (US\$ '000) ^{xi} Land Area (square Kilometres) Population (thousand mid year 2006)	\$274 13 1.5

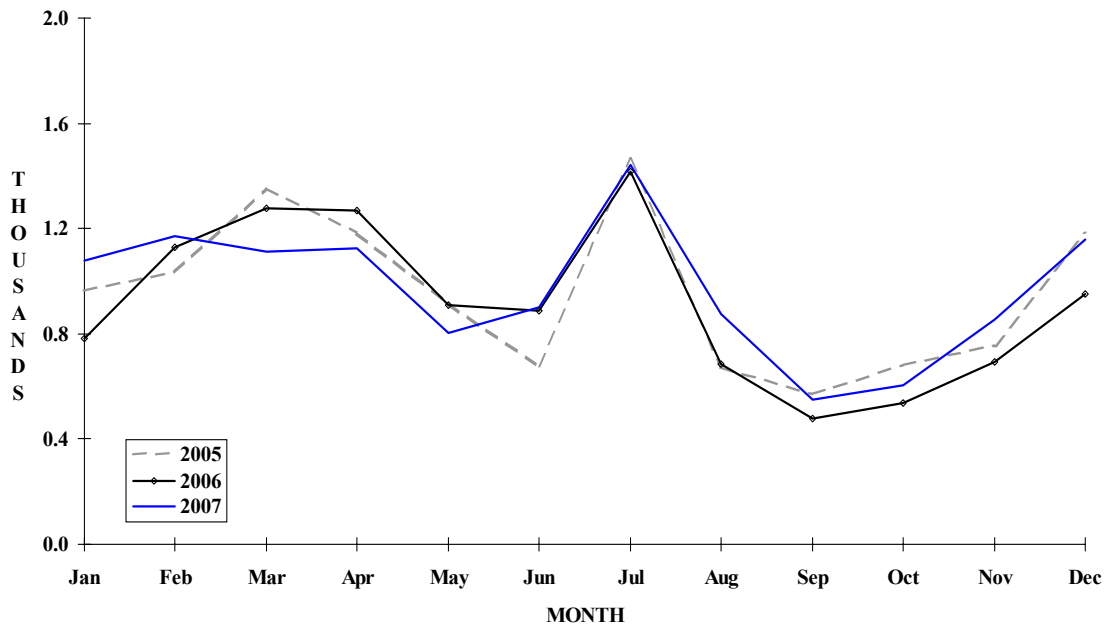
SABA

TOURIST ARRIVALS BY MAIN MARKETS

2007



MONTHLY TOURIST ARRIVALS



VISITOR ARRIVALS BY CATEGORY

Category	2003	2004	2005	2006	% Share	
					2007	2007
Air Arrival Tourists	6790	7291	7350	6838	7031	32.5
Same-day visitors*	11113	12149	13414	11941	9953	46.0
Sea Tourists	3471	3721	4122	4104	4642	21.5
TOTAL	21374	23161	24886	22883	21626	100.0

* Mainly day trippers from St Maarten

TOURIST ARRIVALS BY COUNTRY OF RESIDENCE

Country of Residence *	2003	2004	2005	2006	% Share	
					2007	2007
Holland/Antilles	3245	3320	3703	3614	3507	30.0
United States	3656	4172	4288	4079	4466	38.3
Canada	450	592	645	633	744	6.4
United Kingdom	591	555	606	514	623	5.3
France	551	753	788	648	754	6.5
Other Countries	1768	1620	1432	1524	1579	13.5
TOTAL	10261	11012	11462	11012	11673	100.0

* Nationality is used as a proxy

MONTHLY TOURIST ARRIVALS

Month	2003	2004	2005	2006	% Change	
					2007	2007/06
January	844	857	962	783	1077	37.5
February	904	908	1035	1130	1173	3.8
March	923	1065	1355	1275	1112	-12.8
April	818	1179	1186	1268	1124	-11.4
May	939	911	918	911	804	-11.7
June	826	671	678	887	900	1.5
July	1162	1369	1468	1415	1442	1.9
August	968	906	672	683	877	28.4
September	424	581	570	478	549	14.9
October	620	704	680	536	604	12.7
November	761	707	758	694	854	23.1
December	1072	1154	1180	952	1157	21.5
TOTAL	10261	11012	11462	11012	11673	6.0

**Includes other visitors*

TOURIST ACCOMMODATION (Rooms)

Rooms	2001	2002	2003	2004	2005
	85	n.a	n.a	n.a	n.a

Source: Saba Tourist Bureau