

## SURINAME

### Visitor Arrival Summary

Tourist Air Arrivals to Suriname experienced a significant growth in 2010, expanding by 35.8 percent, with a total of 204.5 thousand. Winter arrivals enjoyed almost 94.0 percent growth, exploding from 32.9 thousand in 2009 to 63.7 thousand in 2010. Growth in the Summer was comparatively benign, but was still recorded at a creditable 19.6 percent.

- ◆ Of note was the double digit growth reported from all major source markets. Arrivals from Holland continued to dominate the market with a 49.7 percent. The annual total of 101.6 thousand was 25.5 percent higher than 81.1 thousand of 2009 and even surpassed the previous high of 10.2 thousand recorded in 2007. The Caribbean market experienced significant growth of 49.9 percent as numbers moved from 29.3 thousand to 43.9 thousand owing mainly to the 39.5 percent increase in traffic from Guyana. Arrivals from South America likewise surged to just under 36.0 thousand, a jump of 54.8 percent.

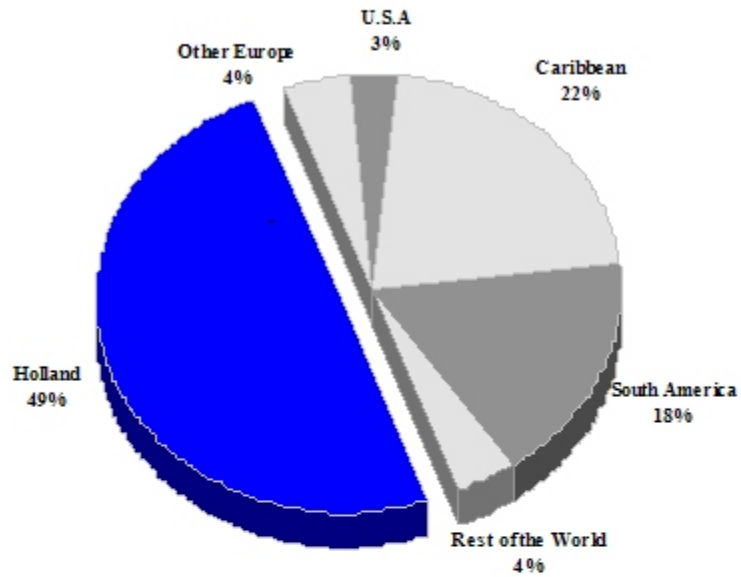
#### TOURISM HIGHLIGHTS FOR 2010

VISITOR ARRIVALS			
Air Arrivals ➔	204,519	Sea Arrivals	n.a.
VISITOR PROFILE			
<b>Tourist Arrivals by Purpose of Visit <sup>V</sup></b> ➔ <i>Holiday</i> ➔ <i>Business</i> ➔ <i>Other</i>	83.8% 9.4% 6.8%	<b>Tourist Arrivals by Place of Stay * <sup>I</sup></b> ➔ <i>Hotels</i> ➔ <i>Private/Unregistered</i> ➔ <i>Friend/not specified</i>	11% 40% 49%
TOURISM AND OTHER RELATED ECONOMIC STATISTICS			
Total Expenditure (US\$ millions) <sup>II</sup>	\$77.4	GDP at Factor Cost (US\$ millions) <sup>VI</sup>	\$1,128.1
ACCOMMODATION STATISTICS		SOCIO-ECONOMIC STATISTICS	
Number of rooms <sup>X</sup>	1,994	Land Area (thousand square Kilometres)	163.8
		Population (thousand mid year 2009)	524.1

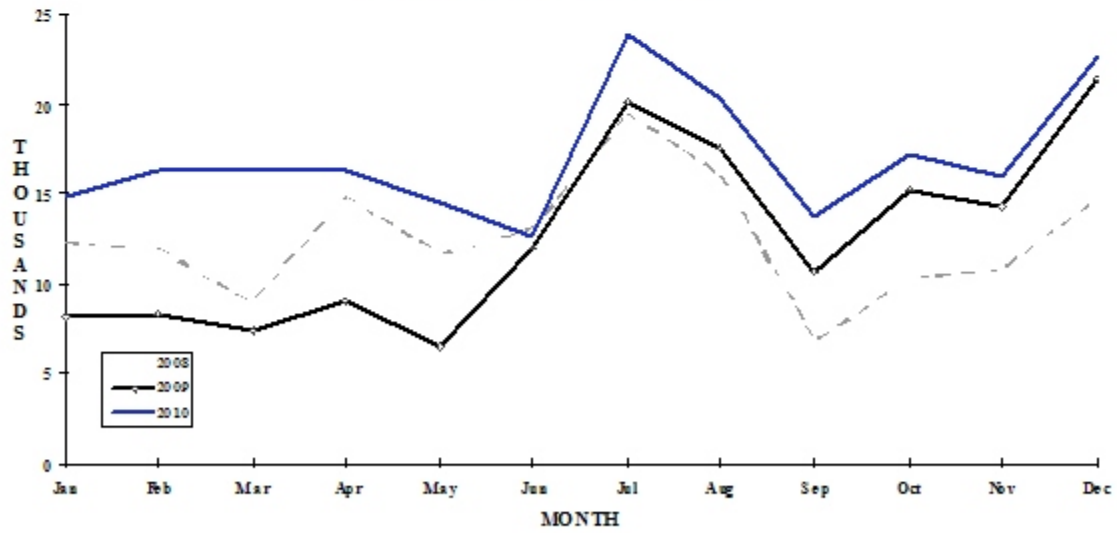
\* Based on 2000 visitor survey

# SURINAME

**TOURIST ARRIVALS BY MAIN MARKETS  
2010**



**MONTHLY TOURIST ARRIVALS**



**SURINAME**

**VISITOR ARRIVALS BY CATEGORY**

<b>Category</b>	<b>2003 <sup>n</sup></b>	<b>2004</b>	<b>2005</b>	<b>2006</b>	<b>2007</b>	<b>% Share 2007</b>
Air Arrivals	n.a	n.a	n.a	n.a	n.a	n.a
Sea Arrivals *	n.a	n.a	n.a	n.a	n.a	n.a
<b>Total</b>	<b>n.a</b>	<b>** 96019</b>	<b>188622</b>	<b>n.a</b>	<b>n.a</b>	<b>n.a</b>

<sup>n</sup> New series

\* Arrivals at Nieuw Nickerie Harbour

\*\* June - Dec only

**TOURIST AIR ARRIVALS BY NATIONALITY**

<b>Country of Residence</b>	<b>2006</b>	<b>2007</b>	<b>2008</b>	<b>2009</b>	<b>2010</b>	<b>% Share 2010</b>
United States	3411	4573	4973	4964	6600	3.2
Canada	n.a	1226	1193	1320	1720	0.8
Holland	91912	101222	88380	81117	101578	49.7
Other Europe	6380	6912	6919	6700	8677	4.2
South America	22362	21683	22441	23244	35993	17.6
Caribbean	22854	22922	22316	29285	43901	21.5
Rest of World	5976	3971	4489	3998	6050	3.0
<b>TOTAL</b>	<b>152895</b>	<b>162509</b>	<b>150711</b>	<b>150628</b>	<b>204519</b>	<b>100.0</b>

## SURINAME

## MONTHLY AIR ARRIVALS\*

Month						% Change
	2006	2007	2008	2009	2010	2009/08
January	10056	9948	12309	8173	14773	80.8
February	12812	14172	11916	8300	16323	96.7
March	12019	11966	8947	7393	16308	120.6
April	13582	14976	14832	8987	16302	81.4
May	9520	11652	11576	6397	14482	126.4
June	10888	12324	13104	12007	12586	4.8
July	18035	22207	19452	20023	23949	19.6
August	16601	13050	16081	17532	20373	16.2
September	9089	9765	6794	10641	13737	29.1
October	10143	15145	10265	15262	17175	12.5
November	11991	12758	10808	14237	15848	11.3
December	18159	14546	14627	21444	22663	5.7
<b>TOTAL</b>	<b>152895</b>	<b>162509</b>	<b>150711</b>	<b>150396</b>	<b>204519</b>	<b>36.0</b>

## TOURIST ACCOMMODATION (Rooms)

Type of Accommodation	2002	2003	2004	2005
Hotels	n.a	n.a	n.a	678
Guest Houses	n.a	n.a	n.a	n.a
Other	n.a	n.a	n.a	1316
<b>TOTAL</b>	<b>n.a</b>	<b>n.a</b>	<b>n.a</b>	<b>1994</b>

Source: Suriname Tourism Foundation

## TRINIDAD AND TOBAGO

### Visitor Arrival Summary

**Full year Tourist arrivals to Trinidad and Tobago were unavailable for 2010.** Reported numbers up to November 2009 show a 5.5 percent decline, with the Winter down by 7.7 percent and the Summer down by 4.0 percent. The total for the January to November period was reported at 371.9 thousand as compared with 393.4 thousand for the similar period in 2008.

- ◆ The American market which accounted for 45.8 percent of total arrivals showed a marginal increase of 1.2 percent during the January to November, 2009 period. Arrivals from all other major source markets declined. The Caribbean, while remaining an important source market (20.0 percent of the whole), fell away sharply by 16.3 percent, ending at 74.5 thousand tourists. The Canadian market, 11.4 percent of all stay-over arrivals, fell off by 11.3 percent, while tourists from the European countries (14.5 percent market share) shrank by 5.4 percent. This was the fourth consecutive year of dropping levels of tourist arrivals from the Caribbean and European markets.
- ◆ The Cruise industry recorded a slump in 2010. An estimated 101.8 thousand Cruise Passengers arrived, a reduction of 14.9 percent, with 70.4 thousand arriving in the Winter and 29.6 thousand arriving in the Summer.

### TOURISM HIGHLIGHTS FOR 2010

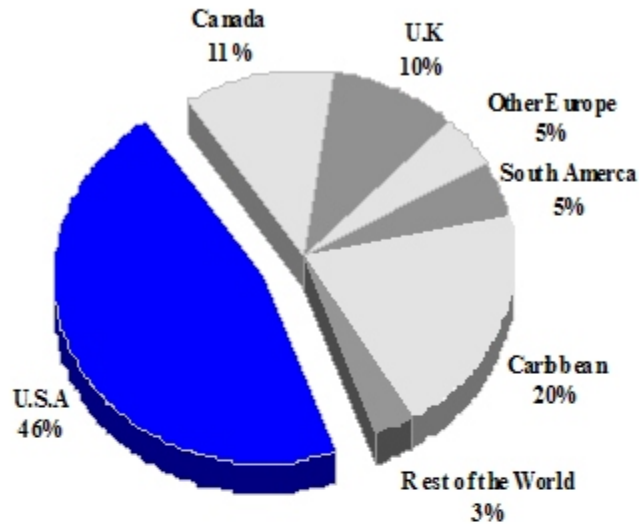
VISITOR ARRIVALS			
Tourist Arrivals <sup>I Jan-Nov</sup> ➔	371,889	Cruise Passengers	101,798
➔ Summer	61.5%	➔ Summer	29.6%
➔ Winter	38.5%	➔ Winter	70.4%
VISITOR PROFILE			
Tourist Arrivals by Purpose of Visit <sup>II</sup>		Tourist Arrivals by Place of Stay <sup>I</sup>	
➔ Holiday	62.7%	➔ Hotels	17.5%
➔ Business	19.1%	➔ Apartment/Guest Houses	4.6%
➔ Other	18.2%	➔ Private	57.4%
		➔ Other	20.5%
TOURISM AND OTHER RELATED ECONOMIC STATISTICS			
Total Expenditure (US\$ millions) <sup>I</sup>	\$366.6	GDP at Factor Cost (US\$ millions) <sup>VI</sup>	\$11,463.8
Tourism Budget (US\$ thousands) <sup>X</sup>	\$4,117	Consumer Price Index (% ch. 2010/'09)	9.9%
ACCOMMODATION STATISTICS		SOCIO-ECONOMIC STATISTICS	
Rooms <sup>II</sup> *	5,796	Land Area (square Kilometres)	5,128
Room Occupancy Rates <sup>III</sup>	52.0%	Population (thousand mid year 2010)	1,317.7

\* estimate

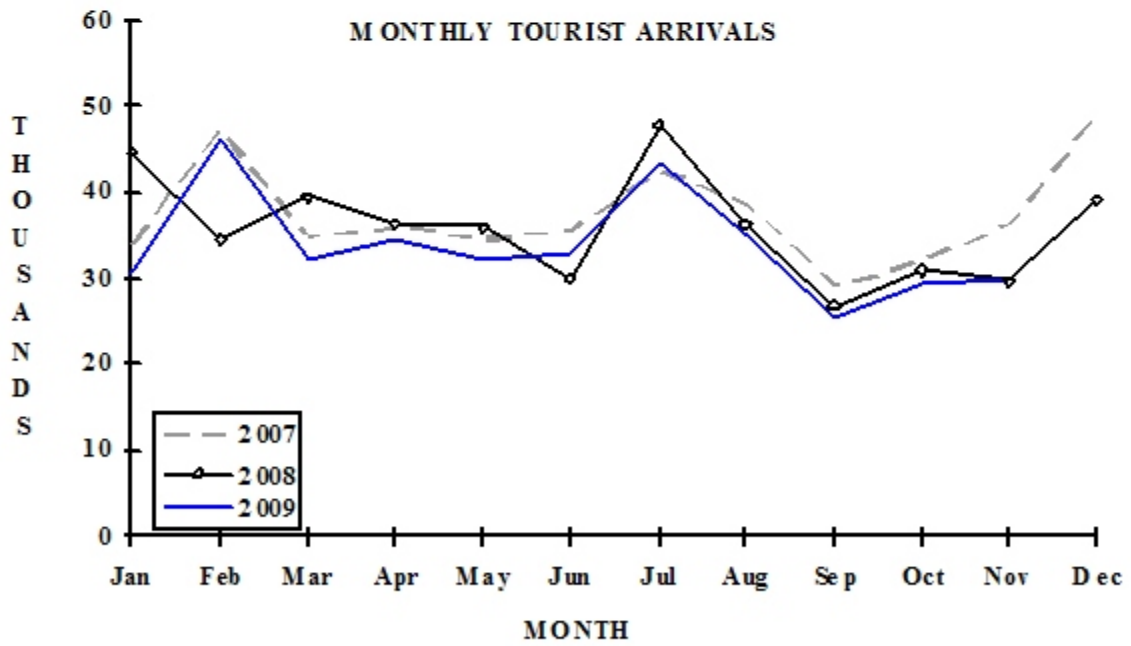
# TRINIDAD & TOBAGO

## TOURIST ARRIVALS BY MAIN MARKETS

2009 Jan-Nov



## MONTHLY TOURIST ARRIVALS



TRINIDAD AND TOBAGO

TOURIST ARRIVALS BY COUNTRY OF RESIDENCE

Country of Residence	2005	2006	2007	2008	2009 <sup>Jan-Nov</sup>	% Share 2009
United States	167985	170893	180557	187515	170204	45.8
Canada	47702	49242	51411	53647	42537	11.4
United Kingdom	63523	58612	58660	43051	36064	9.7
Other Europe	27913	25647	23851	20138	17881	4.8
South America	14907	15231	17380	18005	16637	4.5
Guyana	22208	23673	25668	24696	18730	5.0
Barbados	35319	31218	21491	19130	13165	3.5
Other Caribbean	73689	71193	56458	52785	42655	11.5
Rest of World	9945	11725	13977	13584	14016	3.8
<b>TOTAL</b>	<b>463191</b>	<b>457434</b>	<b>449453</b>	<b>432551</b>	<b>371889</b>	<b>100.0</b>

MONTHLY TOURIST ARRIVALS

Month	2005	2006	2007	2008	2009	% Change 2009/08
January	44503	31481	33881	44949	30620	-31.9
February	45294	54302	47373	34525	46085	33.5
March	43498	35670	34862	39499	32005	-19.0
April	36023	39610	36063	36388	34641	-4.8
May	35194	37779	34487	36044	32048	-11.1
June	33539	33948	35298	30002	33126	10.4
July	45307	45372	42524	47948	43450	-9.4
August	39802	41457	38791	36414	35112	-3.6
September	28287	26260	29140	26900	25442	-5.4
October	31517	31421	31994	30980	29562	-4.6
November	33372	31220	36190	29772	29798	0.1
December	46855	48914	48850	39130	n.a	-
<b>TOTAL</b>	<b>463191</b>	<b>457434</b>	<b>449453</b>	<b>432551</b>	<b>371889</b>	<b>-</b>

TRINIDAD AND TOBAGO

CRUISE PASSENGER ARRIVALS

Month	2006	2007	2008	2009	2010	% Change 2010/09
January	19684	21789	7984	25335	17007	-32.9
February	18791	13661	6239	16550	20783	25.6
March	13852	16122	7658	28245	25249	-10.6
April	10570	7112	1787	12576	8633	-31.4
May	0	0	0	1007	130	-
June	0	0	0	0	468	-
July	0	0	0	0	0	-
August	0	0	0	0	0	-
September	0	0	4442	0	0	-
October	182	0	698	632	170	-
November	10564	5964	3299	8659	11378	31.4
December	12216	12093	16559	26596	17980	-32.4
<b>TOTAL</b>	<b>85859</b>	<b>76741</b>	<b>48666</b>	<b>119600</b>	<b>101798</b>	<b>-14.9</b>

Number of Calls	94	86	65	29	37
-----------------	----	----	----	----	----

TOURIST ACCOMMODATION BY AREA (Rooms)

Area	2003	2004	2005	2006	2007
Trinidad	2528	n.a	n.a	n.a	n.a
Tobago	3415	n.a	n.a	n.a	n.a
<b>TOTAL</b>	<b>5943</b>	<b>n.a</b>	<b>n.a</b>	<b>n.a</b>	<b>n.a</b>

By Type of Accommodation (Trinidad & Tobago)

Type of Accommodation	2004	2005	2006	2007	2008
Hotels	n.a	n.a	3498	3300	3728
Condos	n.a	n.a	771	-	-
Guest Houses	n.a	n.a	1779	994	994
Other	n.a	n.a	-	1074	1074
<b>TOTAL</b>	<b>n.a</b>	<b>n.a</b>	<b>6048</b>	<b>5368</b>	<b>5796</b>

Sources: Tourism Development Authority; Central Statistical Office



## TURKS AND CAICOS ISLANDS

Data for the Turks and Caicos Islands for 2010 was unavailable.

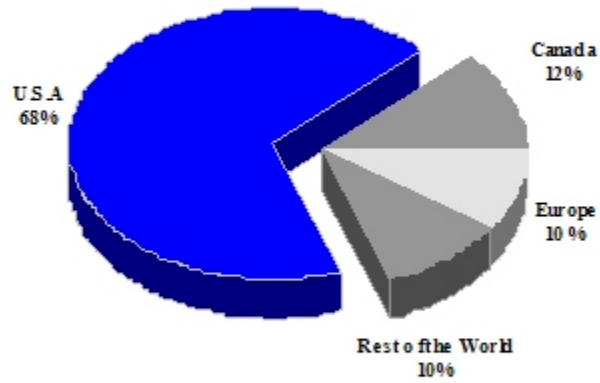
### TOURISM HIGHLIGHTS FOR 2009

VISITOR ARRIVALS			
Tourist Arrivals <sup>II</sup> ✈	264,887	Cruise Passenger Arrivals	<u>No Cruise</u>
➤ <i>Summer</i> * <sup>V</sup>	61.2%		
➤ <i>Winter</i> * <sup>V</sup>	38.8%		
VISITOR PROFILE			
Average Length of Stay ( <i>nights</i> ) <sup>III</sup>	7.0	<b>Tourist Arrivals by Place of Stay</b> <sup>VI</sup>	
<b>Tourist Arrivals by Purpose of Visit</b> <sup>VI</sup>		➤ <i>Hotels</i>	62.2%
➤ <i>Holiday</i>	55.4%	➤ <i>Guest Houses/Apartments</i>	0.6%
➤ <i>Business</i>	36.0%	➤ <i>Private</i>	8.7%
➤ <i>Other</i>	8.6%	➤ <i>Other</i>	28.5%
TOURISM AND OTHER RELATED ECONOMIC STATISTICS			
Total Expenditure ( <i>US\$ millions</i> ) <sup>V</sup>	\$304.0	Tourism Budget ( <i>US\$ thousands</i> ) <sup>Vb</sup>	\$2,316
ACCOMMODATION STATISTICS		SOCIO-ECONOMIC STATISTICS	
Rooms <sup>II</sup>	2,632	Land Area ( <i>square kilometers</i> )	417
Room Occupancy Rate <sup>II</sup>	64.0%	Population ( <i>thousand mid year 2007</i> )	34.9

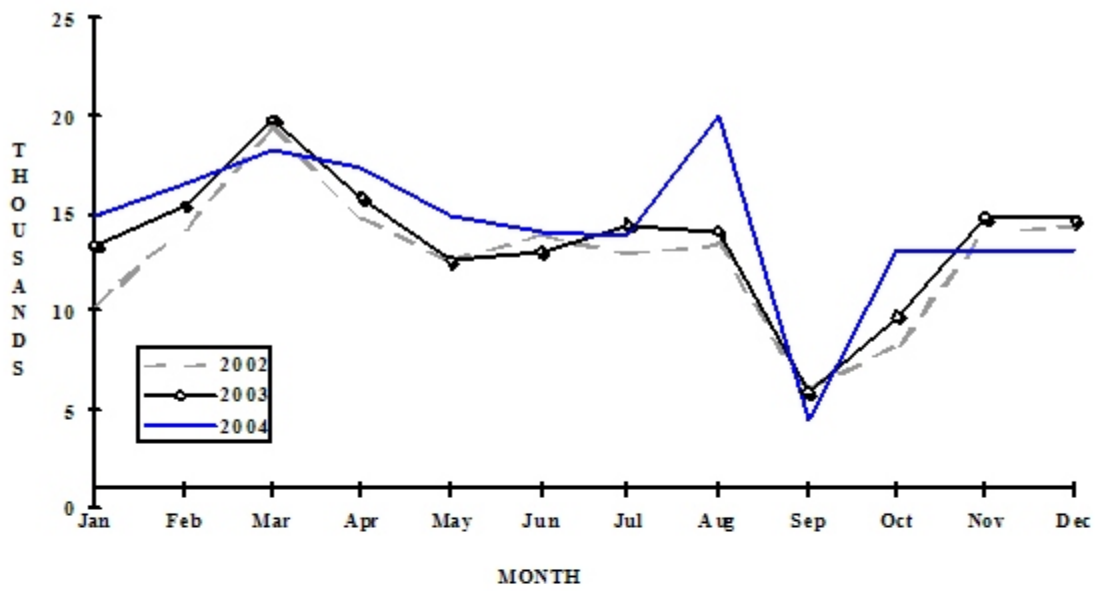
\* Based on visitor arrivals

# TURKS & CAICOS ISLANDS

## TOURIST ARRIVALS BY MAIN MARKETS 2006



## MONTHLY TOURIST ARRIVALS



**TURKS AND CAICOS ISLANDS**

**TOURIST ARRIVALS**

<b>Country</b>	<b>2003</b>	<b>2004</b>	<b>2005</b>	<b>2006</b>	<b>2007</b>	<b>% Share 2007</b>
United States	128990	120645	123346	169662	n.a	-
Canada	14689	19793	21136	29802	n.a	-
United Kingdom	7266	13807	17613	24834	n.a	-
Other Europe	3801				n.a	-
Rest of World	9354	18836	14035	24045	n.a	-
<b>TOTAL</b>	<b>164100</b>	<b>173081</b>	<b>176130</b>	<b>248343</b>	<b>264887</b>	<b>100.0</b>

**MONTHLY TOURIST ARRIVALS**

<b>Month</b>	<b>2003</b>	<b>* 2004</b>	<b>2005</b>	<b>2006</b>	<b>2007</b>	<b>% Change 2007/06</b>
January	13394	15000	n.a	n.a	n.a	-
February	15452	16494	n.a	n.a	n.a	-
March	19843	18250	n.a	n.a	n.a	-
April	15861	17469	n.a	n.a	n.a	-
May	12568	15003	n.a	n.a	n.a	-
June	13042	14095	n.a	n.a	n.a	-
July	14497	13861	n.a	n.a	n.a	-
August	14171	18940	n.a	n.a	n.a	-
September	5950	4552	n.a	n.a	n.a	-
October	9767	13157	n.a	n.a	n.a	-
November	14808	13014	n.a	n.a	n.a	-
December	14747	13246	n.a	n.a	n.a	-
<b>TOTAL</b>	<b>164100</b>	<b>173081</b>	<b>176130</b>	<b>248343</b>	<b>264887</b>	<b>6.7</b>

\* Visitor Arrivals

**TOURIST ACCOMMODATION (Rooms)**

<b>Rooms</b>	<b>2003</b>	<b>2004</b>	<b>2005</b>	<b>2006</b>	<b>2007</b>
Hotels	n.a	n.a	n.a	n.a	n.a
Apartments	n.a	n.a	n.a	n.a	n.a
Villas/Cottages	n.a	n.a	n.a	n.a	n.a
Guest Houses/Other	n.a	n.a	n.a	n.a	n.a
<b>Total</b>	<b>2155</b>	<b>2190</b>	<b>2227</b>	<b>2297</b>	<b>2632</b>

Source: Tourist Board, Turks and Caicos Islands

## US VIRGIN ISLANDS

### Visitor Arrival Summary

Visitor (Stay Over and Same-day) Arrivals to the USVI grew by 4.1 percent in 2010, to total 691.6 thousand. This was the first increase in three years. Stopovers accounted for 85.3 percent of total visitors and increased by 4.8 percent. Same-day arrivals accounted for the remaining 14.7 percent of the total, and showed no appreciable change. Of note is the fact that the latter half of the year, July through December, suffered a fall off of -1.2 percent when compared with the same period of 2009.

- ◆ Non-resident Hotel Registration data is used as a proxy to analyse the market distribution of tourists in the USVI. The United States' overall market share of all arrivals in the USVI continued to grow. In 2010, 93.0 percent of all registration originated from the United States, even though the overall total fell by 3.9 percent or 28.0 thousand. The total from this market was reported at 696.9 thousand. Registrations from all markets contracted with the Caribbean accounting for 3.6 percent of the total or 27.0 thousand, sustaining a 10.1 percent reduction.
- ◆ In all, 680 ships sailed into port in 2010, delivering an aggregate of 1,858.9 thousand Cruise Passengers. This represented an encouraging 17.5 percent increase, or 276.7 thousand passengers in real numbers. Both the Winter and Summer months rebounded strongly, growing by 16.7 percent and 18.1 percent respectively.

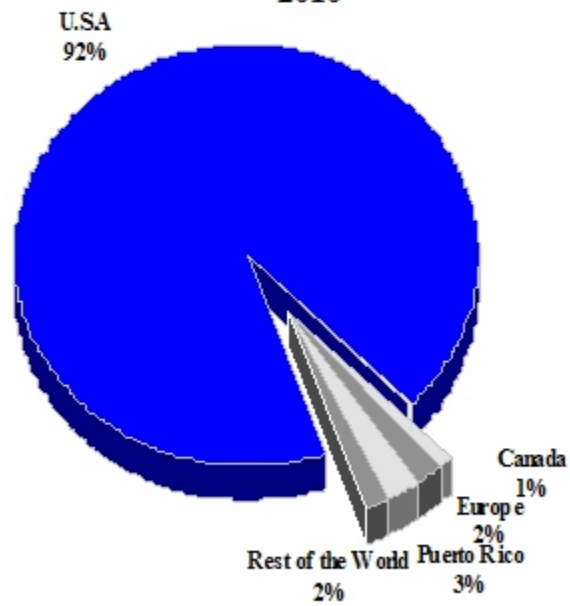
#### TOURISM HIGHLIGHTS FOR 2010

VISITOR ARRIVALS			
Tourist Arrivals →	691,559	Cruise Passengers	1,858,946
→ <i>Summer</i>	59.5%	→ <i>Summer</i>	55.7%
→ <i>Winter</i>	40.5%	→ <i>Winter</i>	44.3%
Same Day Visitors <sup>1</sup>	101,800	Cruise Calls	680
TOURISM AND OTHER RELATED ECONOMIC STATISTICS			
Total Expenditure (US\$ millions) <sup>1</sup>	\$1,021.3	Consumer Price Index (% ch.2008/'07)	7.1%
Cruise Expenditure (US\$ millions) <sup>1</sup>	\$305.3		
ACCOMMODATION STATISTICS			
<b>Total Hotel Rooms</b>	5,008	<b>St. Thomas/St. John - Hotel Rooms</b>	3,799
Room Occupancy Rate	57.1%	Occupancy Rate	60.7%
ACCOMMODATION STATISTICS (continued)		SOCIO - ECONOMIC STATISTICS	
<b>St. Croix - Hotel Rooms</b>	1,209	Land Area (square kilometers)	342
Occupancy Rate	45.8%	Population (thousand mid year 2010)	110.0

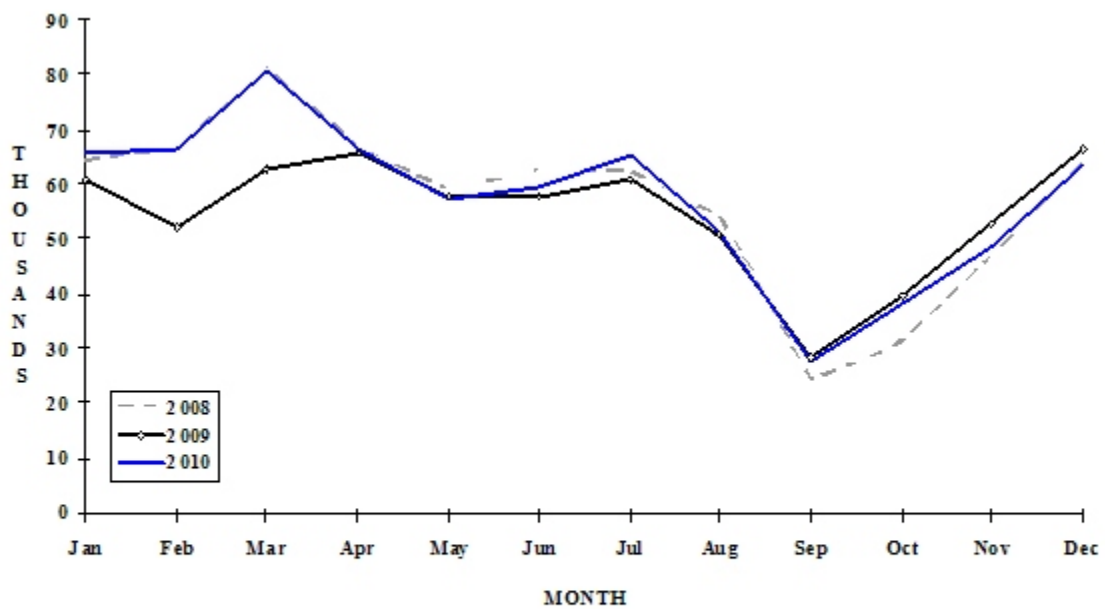
# US VIRGIN ISLANDS

## HOTEL REGISTRATIONS BY MAIN MARKET

2010



## MONTHLY TOURIST ARRIVALS



## VISITOR AIR ARRIVALS BY CATEGORY

Category	2005	2006	2007	2008	2009
Tourists	593300	570000	586400	573700	562300
Same-day visitors*	96100	97200	101900	104400	102000
<b>TOTAL</b>	<b>689400</b>	<b>667200</b>	<b>688300</b>	<b>678100</b>	<b>664300</b>

St Thomas\St John 544800 533400 558400 558400 533300

\* Excluding Cruise Passengers

## NON-RESIDENT HOTEL REGISTRATIONS\*\*

Country of Residence	2006	2007	2008	2009	2010	% Share 2010
United States	605763	612279	680565	724910	696878	93.0
Canada	5268	6018	9112	10412	6601	0.9
Europe	15077	14884	15859	16479	14446	1.9
Puerto Rico	24823	20682	21319	19776	19019	2.5
Other Caribbean	11226	10681	7533	10294	8010	1.1
Latin America	1762	1481	1747	1488	1221	0.2
Rest of World	37123	13553	3946	3790	2854	0.4
<b>TOTAL</b>	<b>701042</b>	<b>679578</b>	<b>740081</b>	<b>787149</b>	<b>749029</b>	<b>100.0</b>

\*\* Totals vary according to the number of hotels responding to the survey; the reader should be wary of year-to-year comparisons.

## VISITOR AIR ARRIVALS BY MONTH\*\*\*

Month	2006	2007	2008	2009	2010	% Change 2010/09
January	64971	59833	64431	60553	66212	9.3
February	63469	59783	66305	62131	66391	6.9
March	76808	79555	81280	62461	80980	29.6
April	74989	66643	67121	65603	66526	1.4
May	57929	55919	58859	57432	57316	-0.2
June	60087	61742	62779	57923	59710	3.1
July	61643	63398	62455	60956	65475	7.4
August	44628	56009	54045	50610	51306	1.4
September	23779	30098	24400	28272	27881	-1.4
October	35204	42192	30997	38958	38426	-1.4
November	46769	52593	46879	52584	48064	-8.6
December	61086	65607	63743	66766	63272	-5.2
<b>TOTAL</b>	<b>671362</b>	<b>693372</b>	<b>683294</b>	<b>664249</b>	<b>691559</b>	<b>4.1</b>

\*\*\* Excluding resident arrivals and inter-island traffic but including excursionists

US VIRGIN ISLANDS

CRUISE PASSENGER ARRIVALS

Month						% Change	
	2006	2007	2008	2009	2010	2010/09	
January	200681	229450	230098	186405	205550	10.3	
February	187511	195526	194928	181826	194097	6.7	
March	208264	212151	226876	181175	256478	41.6	
April	198878	167408	184125	155626	166877	7.2	
May	124800	114689	92836	85763	93386	8.9	
June	101846	103866	104546	91938	108235	17.7	
July	118570	119208	105622	91489	113558	24.1	
August	126044	127081	98503	79165	97662	23.4	
September	107313	95632	65377	65314	81021	24.0	
October	124427	130043	78362	98305	116781	18.8	
November	185717	186170	156425	155478	195548	25.8	
December	219482	236654	219369	209780	229753	9.5	
<b>TOTAL</b>	<b>1903533</b>	<b>1917878</b>	<b>1757067</b>	<b>1582264</b>	<b>1858946</b>	<b>17.5</b>	
Number of Calls	782	752	687	621	680		

TOURIST ACCOMMODATION

Type of Accommodation	2006	2007	2008	2009	2010
Hotel (rooms)	3739	3678	3782	3809	3878
Condo/Villa Units	1073	1079	1075	1139	1130
<b>TOTAL</b>	<b>4812</b>	<b>4757</b>	<b>4857</b>	<b>4948</b>	<b>5008</b>
St Thomas/St. John	3650	3580	3670	3748	3799
St Croix	1162	1177	1187	1200	1209

Source: Bureau of Economic Research, USVI Department of Commerce

## VENEZUELA

### Visitor Arrival Summary

Tourist Arrivals to Venezuela were reported at 615.2 thousand in 2009. This represents a 17.4 percent drop in arrival levels over the previous year's total. The Winter period gave rise to only 197.6 thousand stay overs as opposed to 268.0 thousand in 2008, a 26.3 percent reduction. The Summer period also suffered a 12.4 percent fall off, ending at 417.6 thousand in 2009.

- ◆ The Europe an market contracted by almost 20.0 percent totaling 241.4 thousand in 2009. The South American market shrank similarly by 18.2 percent, down from 226.6 thousand in 2008 to 185.3 thousand in 2009.
- ◆ Cruise Passenger Arrivals fell to two thirds of the 2008 figure, amounting to 77.9 thousand. Both the Winter and Summer seasons fell away sharply by 31.9 percent and 26.5 percent respectively.

### TOURISM HIGHLIGHTS FOR 2009

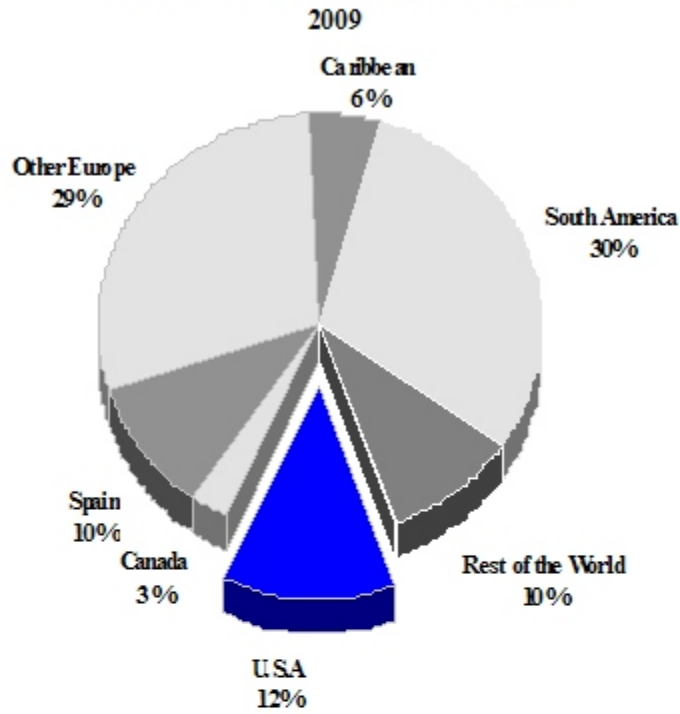
VISITOR ARRIVALS			
Tourist Arrivals ✈	615,188	Tourist Air Arrivals to Maiquetía (Caracas)	n.a
↳ Summer	67.9%	Tourists Air Arrivals to Porlamar	n.a
↳ Winter	32.1%		
Cruise Passenger Arrivals	77,941		
VISITOR PROFILE			
<b>Tourist Arrivals by Purpose of Visit</b>		<b>Main Source of Information**</b>	
↳ Holiday	71.7%	↳ Television	5.02%
↳ Business	25.2%	↳ Family and Friends	43.31%
↳ Other	3.1%	↳ Newspapers	3.01%
		↳ Other	48.66%
TOURISM AND OTHER RELATED ECONOMIC STATISTICS			
Total Expenditure (US\$ millions)	\$780.0	Average Daily Expenditure (US\$)	\$72.9
Average visitor expenditure (US\$)	\$1,305.0	GDP at Factor Cost (US\$ millions) <sup>VI</sup>	\$102,484
ACCOMMODATION STATISTICS		SOCIO-ECONOMIC STATISTICS	
Rooms <sup>II</sup>	33,290	Land Area (square kilometers)	912,050
		Population (thousand mid year 2008)	27,934.7

\*\*Source: September 1998 Survey of Receptive Tourist at the Simon Bolivar International Airport of Maquetía

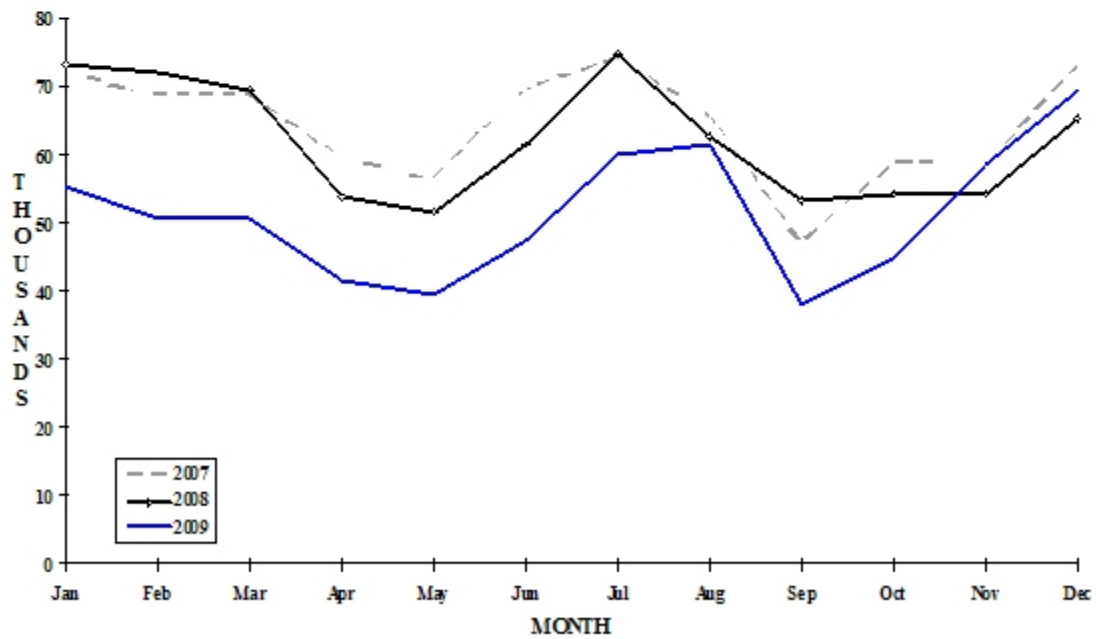


# VENEZUELA

## TOURIST ARRIVALS BY MAIN MARKETS



## MONTHLY TOURIST ARRIVALS



VENEZUELA

**TOURISTS AIR ARRIVALS BY INTERNATIONAL AIRPORTS**

Area	2005	2006	2007	2008	% Share	
					2009	2009
Maiquetía (Caracas)	559884	562596	559319	543780	489056	79.5
Porlamar *	115079	121800	134063	109436	58779	9.6
Maracaibo	19012	22627	23417	28876	13251	2.2
Punto Fijo						
San Antonio						
Barcelona	12128	40907	53768	62617	54102	8.8
Barquisimeto						
Coro						
<b>TOTAL</b>	<b>706103</b>	<b>747930</b>	<b>770567</b>	<b>744709</b>	<b>615188</b>	<b>100.0</b>

*These cities are major tourism areas in Venezuela.*

*\* "The International Airport of the Caribbean" is located in Porlamar in the state of Nueva Esparta. This state consists of the tourist destinations of Margarita, Coche and Cubagua Islands*

**TOURISTS ARRIVALS BY MAJOR MARKETS**

Country of Residence	2005	2006	2007	2008	% Share	
					2009	2009
United States	89701	88825	90074	86982	76059	12.4
Canada	25527	28014	26670	25870	18165	3.0
Argentina	26596	26287	26863	26055	24601	4.0
Columbia	74497	84293	79735	77417	61659	10.0
Other South America	88256	110058	123026	123173	99042	16.1
Central America	12421	12404	11286	11377	10760	1.7
Holland	16892	18129	19985	17651	10528	1.7
Italy	56521	53177	56005	52131	45926	7.5
Spain	66181	65894	75301	66649	62848	10.2
Other Europe	156716	160401	164750	165148	122126	19.9
Caribbean	40948	43880	43256	39940	33726	5.5
Rest of World	51847	56568	53616	52316	49748	8.1
<b>TOTAL</b>	<b>706103</b>	<b>747930</b>	<b>770567</b>	<b>744709</b>	<b>615188</b>	<b>100.0</b>

VENEZUELA

TOURISTS ARRIVALS BY MONTH

Month	2005	2006	2007	2008	% Change	
					2009	2009/08
January	63517	69841	71883	72931	55118	-24.4
February	58558	63135	68564	71784	50665	-29.4
March	60418	61140	68666	69570	50311	-27.7
April	47603	51629	59470	53695	41522	-22.7
May	47583	48972	56366	51494	39194	-23.9
June	52919	56883	69504	61197	47552	-22.3
July	71052	77505	74055	74942	59760	-20.3
August	69209	69257	65571	62544	61227	-2.1
September	43678	53172	47009	53130	37646	-29.1
October	56843	57268	58465	54016	44711	-17.2
November	59526	62075	58271	54050	58273	7.8
December	75197	77053	72743	65356	69209	5.9
<b>TOTAL</b>	<b>706103</b>	<b>747930</b>	<b>770567</b>	<b>744709</b>	<b>615188</b>	<b>-17.4</b>

CRUISE PASSENGER ARRIVALS

Month	2005	2006	2007	2008	% Change	
					2009	2009/08
January	21140	36322	33455	30667	14790	-51.8
February	15835	31800	22170	19640	19954	1.6
March	25820	32838	19340	24031	19722	-17.9
April	13394	24956	11822	8714	2115	-75.7
May	0	0	2880	1416	1651	16.6
June	0	0	2602	0	978	-
July	0	0	4227	0	2249	-
August	0	0	3530	0	2861	-
September	0	0	2823	0	221	-
October	4028	2566	3257	0	3722	-
November	25651	15238	14846	9404	9678	2.9
December	28875	19625	21174	18229	0	-
<b>TOTAL</b>	<b>134743</b>	<b>163345</b>	<b>142126</b>	<b>112101</b>	<b>77941</b>	<b>-30.5</b>

## ESTIMATED VISITOR EXPENDITURE (US dollars per tourist)

Expenditure	2005	2006	2007	2008	2009
<b>Total</b>	<b>976.9</b>	<b>1159.0</b>	<b>1137.3</b>	<b>1329.0</b>	<b>1305.0</b>

## TOURISTS ACCOMMODATION BY STATES

Area	2003	2004	2005	2006	2007	% Share 2007
Caracas Metropolitan Area	8535	5934	n.a	n.a	n.a	-
Anzoátegui <sup>1</sup>	4252	4252	n.a	n.a	n.a	-
Bolívar <sup>2</sup>	1630	1630	n.a	n.a	n.a	-
Carabobo <sup>3</sup>	1599	1478	n.a	n.a	n.a	-
Falcón <sup>4</sup>	1292	1292	n.a	n.a	n.a	-
Nueva Esparta <sup>5</sup>	4309	3834	n.a	n.a	n.a	-
Mérida <sup>6</sup>	1695	1704	n.a	n.a	n.a	-
Other States	10950	13166	n.a	n.a	n.a	-
<b>Total</b>	<b>34262</b>	<b>33290</b>	<b>n.a</b>	<b>n.a</b>	<b>n.a</b>	<b>-</b>

<sup>1</sup> The State of Anzoátegui consists of the tourist destination of Barcelona - Puerto La Cruz

<sup>2</sup> The State of Bolívar consists of the tourist destination of Canaima National Park and La Gran Sabana

<sup>3</sup> The State of Carabobo consists of the tourist destination, Valencia and Puerto Cabello

<sup>4</sup> The State of Falcón consists of the tourist destinations of Coro, Punto Fijo and the Morrocoy National Park

<sup>5</sup> The State of Nueva Esparta consists of the tourist destinations of Margarita, Coche and Cubagua Islands

<sup>6</sup> The State of Mérida consists of the tourist destinations of Mérida City and the Sierra Navada National Park





SECTION V

ECONOMIC & SOCIO-ECONOMIC INDICATORS

**DIVIDER BACK**