



Datos de la Estación

ESTACIÓN:	4007
NOMBRE:	EL CARMEN (SMN)
ESTADO:	CAMPECHE
MUNICIPIO:	CARMEN
LATITUD (°):	18.6533
LONGITUD (°):	-91.7608
ALTURA (msn):	5
SITUACIÓN:	OPERANDO
DATOS DESDE:	1 de diciembre de 1926
HASTA:	31 de diciembre de 2018

Inventario de Registros por Década Año

Estacion		N° de Casos					
Decada	Año	Lluvia	Temp min	Temp max	Temp amb	Evaporación	
1920	1926	31	31	31	31		
	1927	120	120	120	120		
	1928	273	275	275	275		
	1929	365	365	365	365		
	1930	364	365	365	365		
Total 1920		1,153	1,156	1,156	1,156		
1930	1931	365	365	365	365		
	1932	364	366	366	366		
	1933	365	365	365	365		
	1934	364	365	365	365		
	1935	364	365	365	365		
	1936	366	366	366	366		
	1937	365	365	365	365		
	1938	365	365	365	365		
	1939	365	365	365	365		
	1940	307	336	336	336		
Total 1930		3,590	3,623	3,623	3,623		
1940	1941	59	59	59	59		
	1942	306	306	306	306		
	1943	365	365	365	365		
	1944	366	366	366	366		
	1945	365	365	365	364		
	1946	304	304	303	304		
	1947	212	212	212	212		
Total 1940		1,977	1,977	1,976	1,976		
1950	1951	145	144	145	144		
	1952	365	365	364	365		
	1953	365	365	365	365		
	1954	365	365	365	365		
Total 1950		1,240	1,239	1,239	1,239		
1980	1982	13	13	13	13		
	1984	122	103	103	103		
	1985	365	365	365	365		
	1986	364	365	365	365	303	
	1987	365	364	364	364	360	
	1988	335	336	336	336	328	
	1989	365	365	365	365	325	
	1990	365	365	365	365	210	
	Total 1980		2,294	2,276	2,276	2,276	1,526
	1990	1991	365	365	365	365	360
1992		366	366	366	366	359	
1993		365	365	365	365	362	
1994		337	337	337	337	334	
1995		332	332	332	332	326	
1996		366	366	366	366	361	
1997		334	334	334	333	331	
1998		356	356	356	356	334	
1999		365	365	365	365	324	
2000		366	366	366	366	336	
Total 1990		3,552	3,552	3,552	3,551	3,427	
2000	2001	339	339	339	339	334	
	2002	343	343	342	343	299	



Datos de la Estación

ESTACIÓN:	4007
NOMBRE:	EL CARMEN (SMN)
ESTADO:	CAMPECHE
MUNICIPIO:	CARMEN

Inventario de Registros por Década Año

Estacion 4007

		N°de Casos					
Decada	Año	Lluvia	Temp min	Temp max	Temp amb	Evaporación	
2000	2003	365	365	365	365	324	
	2004	366	366	366	366	308	
	2005	335	334	332	334	301	
	2006	351	351	349	351	301	
	2007	349	349	348	349	254	
	2008	349	347	348	348		
	2009	364	364	365	364		
	2010	303	304	303	304		
	Total 2000		3,464	3,462	3,457	3,463	2,121
	2010	2011	332	334	332	334	
2012		365	365	365	365		
2013		365	365	364	365		
2014		365	365	365	365	315	
2015		319	333	333	333	29	
2016		351	357	356	357	324	
2017		364	365	365	365	316	
2018		364	365	365	365	344	
Total 2010			2,825	2,849	2,845	2,849	1,328
Total general		20,095	20,134	20,124	20,133	8,402	

Estacion	4007
NOMBRE	EL CARMEN (SMN)
ESTADO	CAMPECHE

Década	Año	Lluvia (mm)				
		Mín.	Prom.	Máx.	Desv. Est.	
1920	1926	0.0	0.8	8.8	2.3	
	1927	0.0	0.6	36.5	3.5	
	1928	0.0	4.9	72.5	10.9	
	1929	0.0	4.8	90.0	11.8	
	1930	0.0	4.9	180.0	15.3	
Total 1920		0.0	4.3	180.0	12.2	
1930	1931	0.0	5.4	180.0	16.8	
	1932	0.0	6.4	121.0	13.6	
	1933	0.0	4.3	75.0	10.8	
	1934	0.0	5.1	151.0	14.5	
	1935	0.0	3.8	99.0	9.7	
	1936	0.0	6.7	165.0	16.7	
	1937	0.0	5.1	173.0	14.1	
	1938	0.0	6.4	125.0	15.5	
	1939	0.0	4.6	223.0	15.0	
	1940	0.0	2.8	81.0	8.2	
Total 1930		0.0	5.1	223.0	13.9	
1940	1941	0.0	0.8	18.0	3.0	
	1942	0.0	3.7	89.0	11.2	
	1943	0.0	3.5	96.0	10.1	
	1944	0.0	3.2	106.0	9.8	
	1945	0.0	4.7	110.0	14.4	
	1946	0.0	3.4	83.0	9.1	
	1947	0.0	5.5	80.0	13.3	
Total 1940		0.0	3.8	110.0	11.3	
1950	1951	0.0	4.2	63.2	9.8	
	1952	0.0	4.7	165.5	14.5	
	1953	0.0	4.4	98.0	12.2	
	1954	0.0	3.7	235.0	15.2	
Total 1950		0.0	4.3	235.0	13.6	
1980	1982	0.0	0.0	0.0	0.0	
	1984	0.0	13.0	208.2	39.7	
	1985	0.0	6.6	413.8	25.7	
	1986	0.0	4.5	98.0	11.5	
	1987	0.0	3.6	160.0	11.7	
	1988	0.0	4.0	110.3	11.8	
	1989	0.0	5.5	162.0	15.4	
	1990	0.0	5.2	90.3	12.9	
	Total 1980		0.0	5.3	413.8	17.9
	1990	1991	0.0	4.6	96.1	12.9
1992		0.0	4.5	194.5	16.7	
1993		0.0	3.4	103.0	9.1	
1994		0.0	3.8	133.4	12.5	
1995		0.0	5.4	120.0	14.1	
1996		0.0	3.7	101.0	10.6	
1997		0.0	3.5	98.5	9.7	
1998		0.0	4.3	165.0	15.1	
1999		0.0	5.4	121.2	14.2	
2000		0.0	4.7	182.5	14.6	
Total 1990			0.0	4.3	194.5	13.2
2000		2001	0.0	3.8	91.9	10.7
		2002	0.0	4.5	115.5	14.3
	2003	0.0	4.4	245.2	16.9	
	2004	0.0	2.6	70.4	8.7	
	2005	0.0	3.6	63.5	8.7	
	2006	0.0	3.8	77.7	9.6	
	2007	0.0	3.7	166.3	12.8	
	2008	0.0	5.4	128.8	14.8	
	2009	0.0	3.1	66.0	9.5	
	2010	0.0	5.2	120.5	14.8	
Total 2000		0.0	4.0	245.2	12.4	
2010	2011	0.0	2.9	94.3	10.1	
	2012	0.0	3.2	137.2	11.0	
	2013	0.0	6.0	148.5	16.0	
	2014	0.0	4.6	210.0	15.3	

Estacion	4007
NOMBRE	EL CARMEN (SMN)
ESTADO	CAMPECHE

Década	Año	Evap (mm)				
		Mín.	Prom.	Máx.	Desv. Est.	
1920	1926					
	1927					
	1928					
	1929					
	1930					
Total 1920						
1930	1931					
	1932					
	1933					
	1934					
	1935					
	1936					
	1937					
	1938					
	1939					
	1940					
Total 1930						
1940	1941					
	1942					
	1943					
	1944					
	1945					
	1946					
	1947					
Total 1940						
1950	1951					
	1952					
	1953					
	1954					
Total 1950						
1980	1982					
	1984					
	1985					
	1986	0.5	4.6	9.0	2.0	
	1987	0.3	3.7	9.3	1.9	
	1988	0.3	4.2	9.1	1.9	
	1989	0.1	4.5	10.8	2.0	
	1990	0.4	4.7	11.7	2.3	
	Total 1980		0.1	4.3	11.7	2.0
	1990	1991	0.2	4.2	13.2	2.4
1992		0.8	3.9	10.7	1.7	
1993		0.4	4.2	10.2	1.8	
1994		0.9	4.4	12.0	2.0	
1995		0.8	4.7	11.7	2.2	
1996		0.0	5.0	13.0	1.9	
1997		1.0	4.8	11.9	2.0	
1998		0.9	5.5	13.5	2.5	
1999		1.0	5.5	11.6	2.0	
2000		0.6	5.2	10.5	1.9	
Total 1990			0.0	4.7	13.5	2.1
2000		2001	0.6	5.1	11.8	1.9
		2002	0.3	5.2	12.4	2.1
	2003	0.1	5.3	10.8	2.0	
	2004	0.1	5.0	12.9	2.0	
	2005	0.5	4.6	11.1	2.0	
	2006	0.2	4.4	8.6	1.6	
	2007	0.5	4.8	9.5	1.7	
	2008					
	2009					
	2010					
Total 2000		0.1	4.9	12.9	1.9	
2010	2011					
	2012					
	2013					
	2014	0.1	5.0	15.2	2.1	

Estacion	4007
NOMBRE	EL CARMEN (SMN)
ESTADO	CAMPECHE

		Lluvia (mm)				
Década	Año	Mín.	Prom.	Máx.	Desv. Est.	
2010	2015	0.0	4.4	115.0	11.7	
	2016	0.0	4.1	78.5	11.0	
	2017	0.0	4.7	158.0	15.8	
	2018	0.0	4.5	206.0	15.2	
Total 2010		0.0	4.3	210.0	13.6	
Total general		0.0	4.5	413.8	13.7	

Estacion	4007
NOMBRE	EL CARMEN (SMN)
ESTADO	CAMPECHE

		Evap (mm)				
Década	Año	Mín.	Prom.	Máx.	Desv. Est.	
2010	2015	1.9	4.6	8.2	1.6	
	2016	0.3	4.7	10.3	2.0	
	2017	0.0	4.2	14.5	2.0	
	2018	0.1	4.3	11.2	2.0	
Total 2010		0.0	4.5	15.2	2.1	
Total general		0.0	4.7	15.2	2.1	

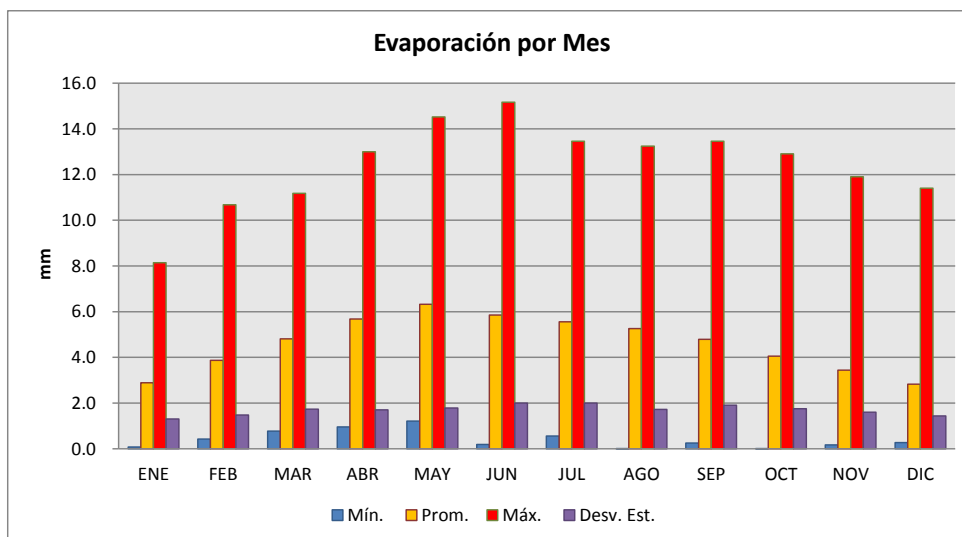
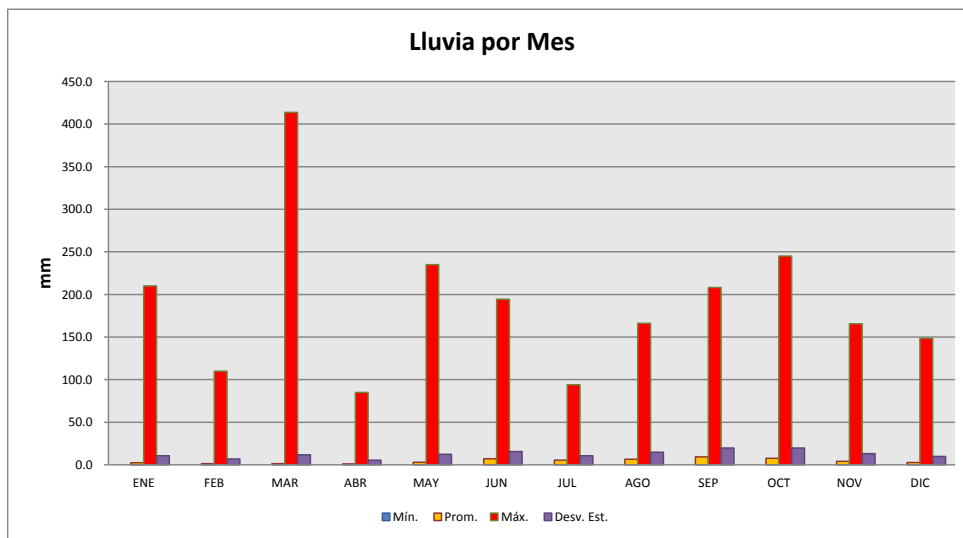


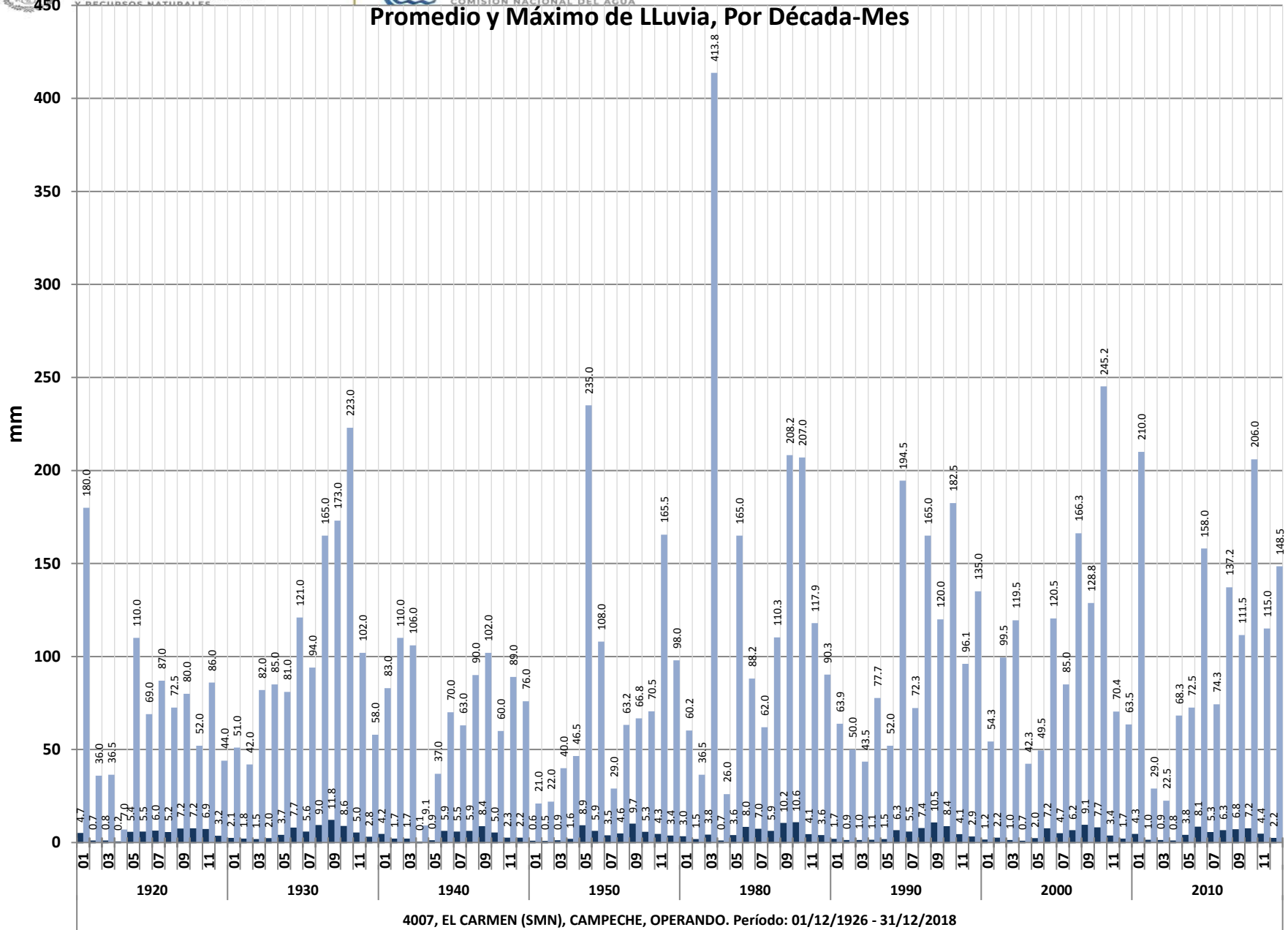
Estación	4007
NOMBRE	EL CARMEN (SMN)
ESTADO	CAMPECHE

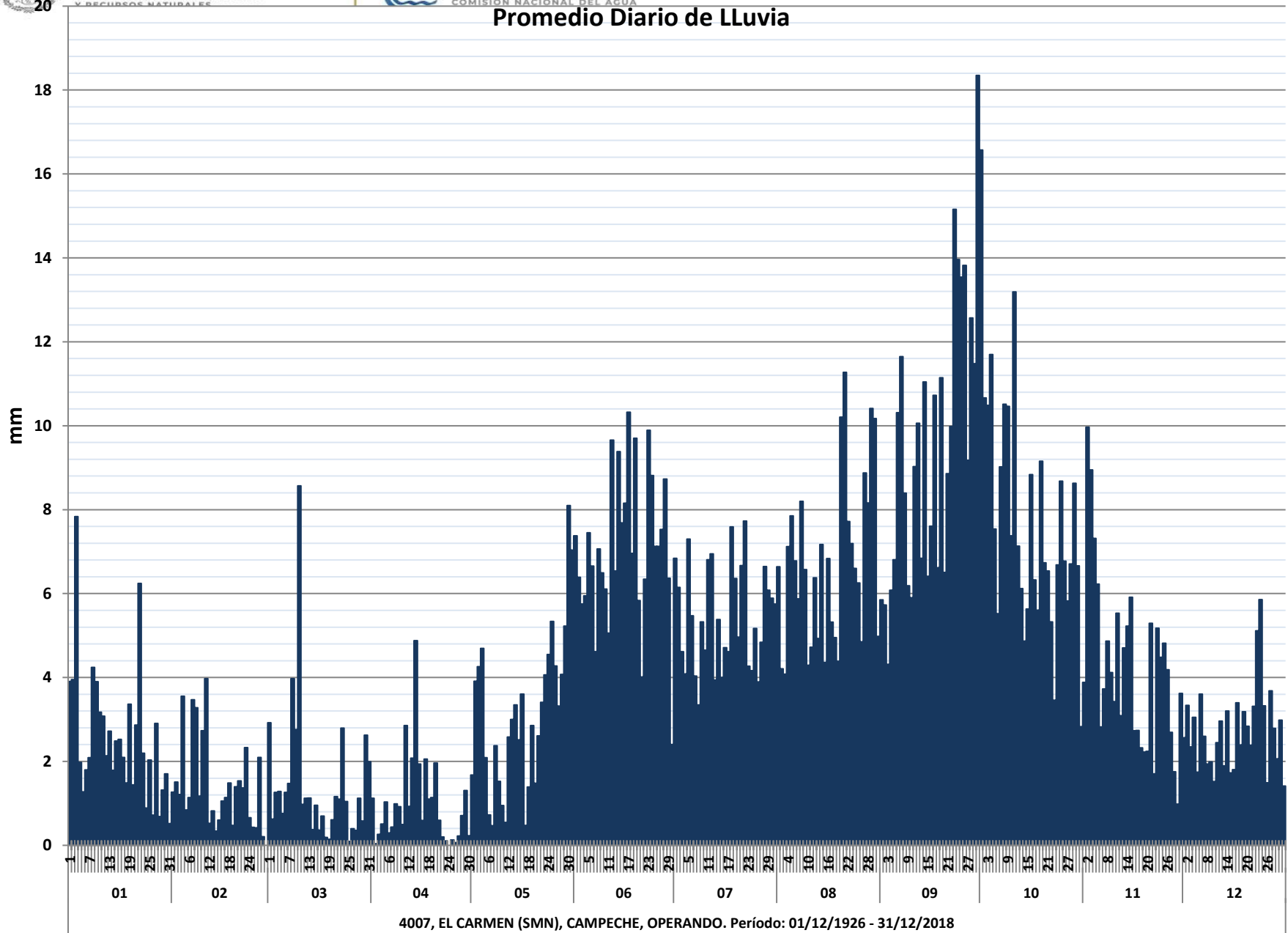
Estación	4007
NOMBRE	EL CARMEN (SMN)
ESTADO	CAMPECHE

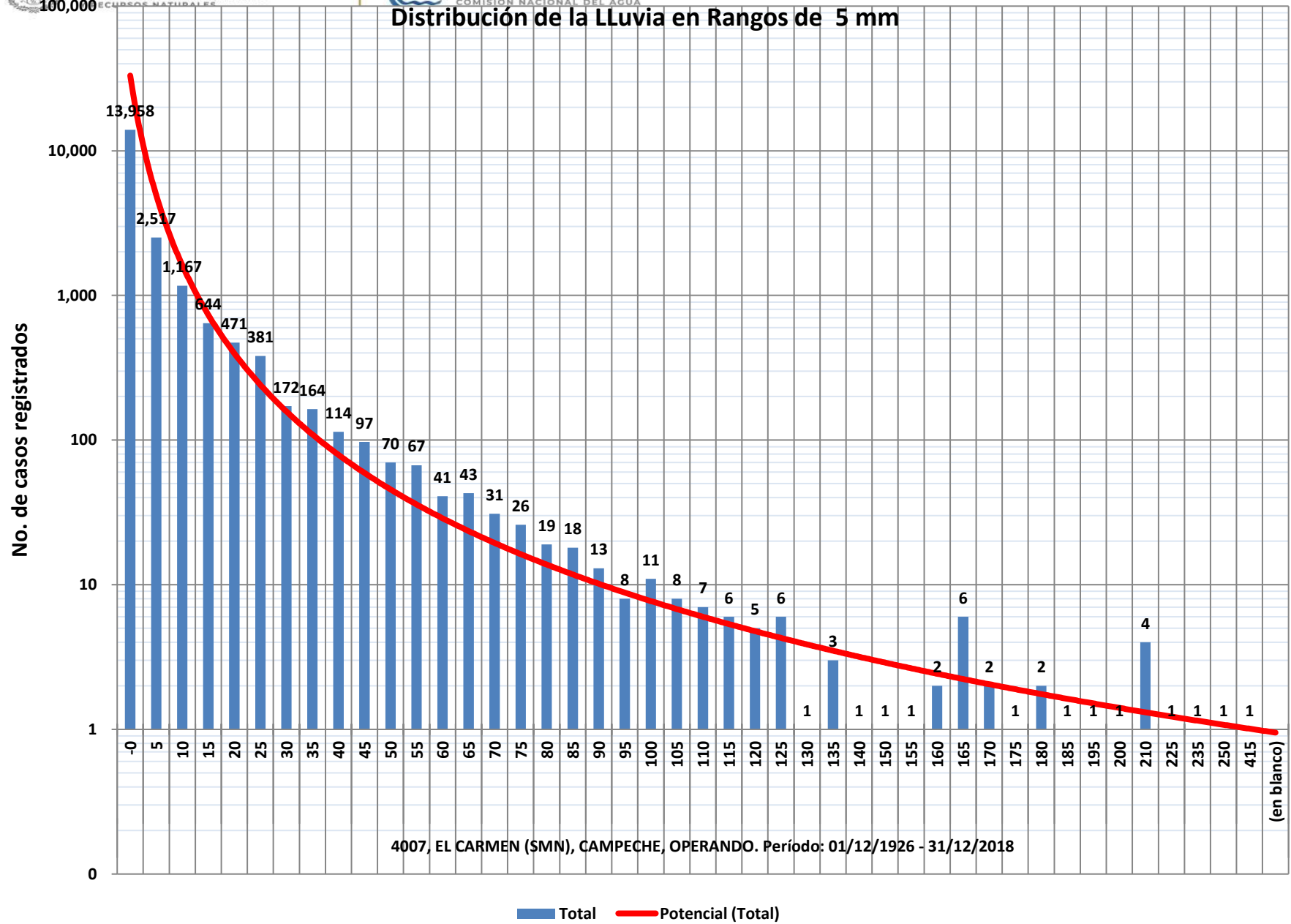
Lluvia (mm)				
Mes	Mín.	Prom.	Máx.	Desv. Est.
ENE	0.0	2.6	210.0	10.7
FEB	0.0	1.5	110.0	6.7
MAR	0.0	1.4	413.8	11.9
ABR	0.0	1.0	85.0	5.6
MAY	0.0	3.1	235.0	12.4
JUN	0.0	7.1	194.5	15.6
JUL	0.0	5.4	94.0	10.6
AGO	0.0	6.7	166.3	14.8
SEP	0.0	9.5	208.2	19.8
OCT	0.0	7.8	245.2	19.8
NOV	0.0	4.2	165.5	13.3
DIC	0.0	2.7	148.5	9.9
Total general	0.0	4.5	413.8	13.7

Evap (mm)				
Mes	Mín.	Prom.	Máx.	Desv. Est.
ENE	0.1	2.9	8.1	1.3
FEB	0.4	3.9	10.7	1.5
MAR	0.8	4.8	11.2	1.7
ABR	1.0	5.7	13.0	1.7
MAY	1.2	6.3	14.5	1.8
JUN	0.2	5.9	15.2	2.0
JUL	0.6	5.6	13.5	2.0
AGO	0.0	5.3	13.2	1.7
SEP	0.3	4.8	13.5	1.9
OCT	0.0	4.1	12.9	1.8
NOV	0.2	3.4	11.9	1.6
DIC	0.3	2.8	11.4	1.4
Total general	0.0	4.7	15.2	2.1









Estacion	4007
NOMBRE	EL CARMEN (SMN)
ESTADO	CAMPECHE

Década	Año	Temp Min (°C)				
		Mín.	Prom.	Máx.	Desv. Est.	
1920	1926	16.9	22.1	24.9	1.4	
	1927	14.0	21.8	25.1	2.3	
	1928	13.8	19.9	23.0	1.7	
	1929	13.0	20.6	23.5	1.9	
	1930	11.0	20.1	24.2	2.3	
Total 1920		11.0	20.4	25.1	2.1	
1930	1931	10.8	20.2	24.5	2.5	
	1932	13.0	20.5	25.0	2.1	
	1933	14.1	20.6	25.0	2.0	
	1934	9.0	20.2	25.6	2.3	
	1935	10.3	19.9	25.3	2.8	
	1936	13.1	22.4	28.9	2.8	
	1937	16.5	23.2	26.5	2.0	
	1938	14.0	22.8	27.0	2.4	
	1939	17.0	23.1	26.9	1.9	
	1940	10.0	22.3	27.0	3.1	
Total 1930		9.0	21.5	28.9	2.7	
1940	1941	11.3	17.9	23.0	3.5	
	1942	11.0	23.6	29.5	2.4	
	1943	15.0	22.7	27.0	2.4	
	1944	11.5	23.1	27.0	2.7	
	1945	15.0	22.9	27.5	2.4	
	1946	11.0	21.4	28.0	3.7	
	1947	14.0	19.7	25.0	2.4	
Total 1940		11.0	22.3	29.5	3.1	
1950	1951	15.0	22.5	28.6	2.2	
	1952	13.0	22.5	27.0	2.3	
	1953	13.0	22.8	28.0	2.8	
	1954	13.0	22.6	27.0	2.8	
Total 1950		13.0	22.6	28.6	2.6	
1980	1982	20.0	25.0	28.0	2.1	
	1984	15.0	20.3	24.0	2.2	
	1985	12.0	21.4	29.0	2.2	
	1986	10.0	20.8	25.5	2.5	
	1987	10.0	20.6	25.0	3.1	
	1988	12.0	21.2	26.0	2.6	
	1989	12.0	20.9	27.0	2.4	
	1990	12.0	21.2	25.0	2.2	
	Total 1980		10.0	21.0	29.0	2.5
	1990	1991	13.0	21.0	25.0	2.3
1992		16.0	22.6	29.0	2.2	
1993		15.0	22.7	30.0	2.5	
1994		14.0	23.2	28.0	2.3	
1995		10.0	23.3	31.0	2.9	
1996		11.0	22.9	28.0	2.9	
1997		14.0	23.0	29.0	2.3	
1998		14.0	23.3	31.0	3.0	
1999		15.0	22.7	29.0	2.4	
2000		12.0	22.1	27.0	2.4	
Total 1990			10.0	22.7	31.0	2.6
2000		2001	12.0	22.1	27.0	2.6
	2002	11.0	22.4	27.0	2.9	
	2003	14.0	22.1	27.0	3.0	
	2004	15.0	22.6	27.0	2.3	
	2005	13.0	22.1	27.0	2.5	
	2006	10.0	22.4	26.0	2.6	
	2007	15.0	22.7	27.0	2.3	
	2008	13.0	22.3	27.0	2.6	
	2009	13.0	22.3	27.0	2.7	
	2010	13.0	22.3	29.0	3.3	
Total 2000		10.0	22.3	29.0	2.7	
2010	2011	13.0	22.4	27.0	2.6	
	2012	16.0	22.6	26.0	2.2	
	2013	12.0	22.6	27.0	2.3	
	2014	13.0	22.5	27.0	2.4	
	2015	13.0	23.2	26.0	2.3	

Estacion	4007
NOMBRE	EL CARMEN (SMN)
ESTADO	CAMPECHE

Década	Año	Temp Max (°C)				
		Mín.	Prom.	Máx.	Desv. Est.	
1920	1926	21.4	28.0	30.9	1.8	
	1927	20.8	29.2	36.2	3.7	
	1928	21.0	29.9	34.5	2.6	
	1929	20.0	30.3	36.6	3.2	
	1930	21.0	31.7	40.5	3.8	
Total 1920		20.0	30.5	40.5	3.4	
1930	1931	21.5	30.3	39.1	3.2	
	1932	21.0	32.2	39.8	3.5	
	1933	19.6	32.4	40.5	3.4	
	1934	21.0	31.9	40.5	3.3	
	1935	18.0	32.6	41.3	3.7	
	1936	22.5	32.2	41.0	2.9	
	1937	22.1	31.9	39.9	3.0	
	1938	22.0	31.9	40.1	3.1	
	1939	22.0	33.3	40.2	3.6	
	1940	20.0	31.1	38.0	3.5	
Total 1930		18.0	32.0	41.3	3.4	
1940	1941	21.0	29.3	35.2	3.2	
	1942	20.0	32.8	39.2	2.8	
	1943	21.0	33.0	39.5	3.3	
	1944	19.0	33.1	39.0	3.1	
	1945	23.5	34.7	41.0	2.5	
	1946	21.0	35.6	45.0	3.5	
	1947	22.0	32.8	39.0	3.3	
Total 1940		19.0	33.6	45.0	3.3	
1950	1951	23.0	32.8	41.0	3.3	
	1952	24.0	32.4	40.0	3.1	
	1953	21.0	33.0	39.0	3.3	
	1954	20.0	31.3	39.0	3.9	
Total 1950		20.0	32.3	41.0	3.5	
1980	1982	30.0	31.7	33.0	1.3	
	1984	26.0	30.7	37.0	2.2	
	1985	19.0	32.5	39.5	3.2	
	1986	24.0	32.8	39.0	3.2	
	1987	24.0	32.5	40.0	3.6	
	1988	21.0	32.9	43.0	3.9	
	1989	19.0	32.5	40.0	3.5	
	1990	24.0	32.8	40.0	2.9	
	Total 1980		19.0	32.6	43.0	3.4
	1990	1991	25.0	33.5	41.0	3.6
1992		22.0	30.9	37.0	2.8	
1993		22.0	31.4	39.0	2.9	
1994		24.0	31.8	38.0	2.8	
1995		25.0	32.1	39.0	2.8	
1996		21.0	31.3	38.5	2.9	
1997		20.0	31.6	38.0	3.1	
1998		24.0	32.3	42.0	3.7	
1999		24.0	31.4	41.0	3.1	
2000		23.0	31.4	39.0	2.8	
Total 1990			20.0	31.8	42.0	3.2
2000		2001	22.0	31.3	38.0	2.9
	2002	23.0	31.6	38.0	2.9	
	2003	20.0	32.2	40.0	3.9	
	2004	20.0	31.6	37.0	3.0	
	2005	24.0	32.1	40.0	3.2	
	2006	21.0	31.3	40.0	3.4	
	2007	22.0	32.1	40.0	3.5	
	2008	23.0	32.6	39.0	2.9	
	2009	23.0	32.8	41.0	3.4	
	2010	20.0	31.8	44.0	4.1	
Total 2000		20.0	31.9	44.0	3.4	
2010	2011	22.0	31.8	39.0	3.4	
	2012	22.0	31.8	39.0	3.0	
	2013	23.0	31.5	39.0	3.2	
	2014	19.0	30.6	38.0	3.0	
	2015	21.0	31.8	39.0	3.0	



Estacion	4007
NOMBRE	EL CARMEN (SMN)
ESTADO	CAMPECHE

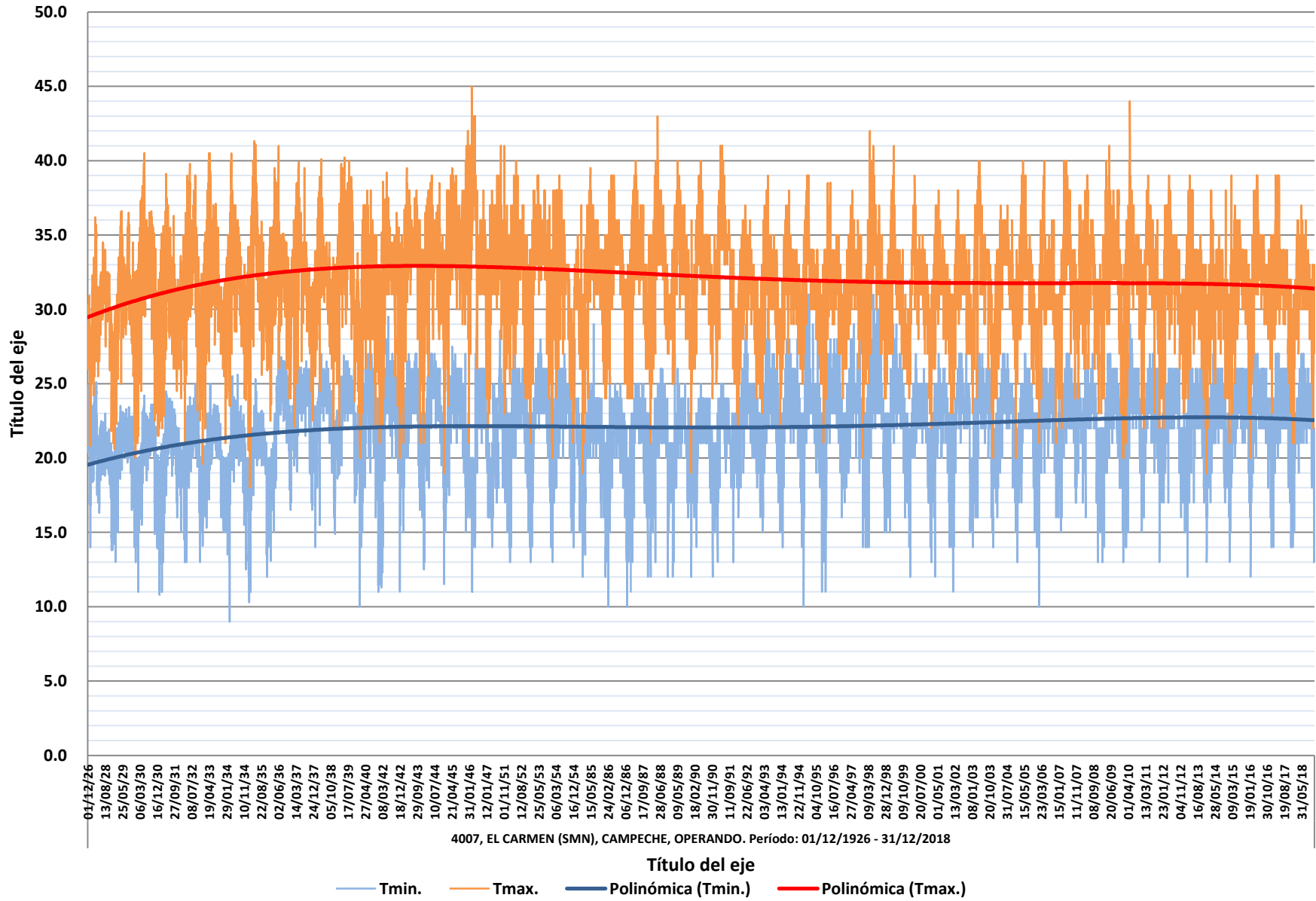
		Temp Min (°C)				
Década	Año	Mín.	Prom.	Máx.	Desv. Est.	
2010	2016	12.0	22.8	27.0	2.2	
	2017	14.0	22.9	27.0	2.4	
	2018	13.0	22.5	27.0	2.3	
Total 2010		12.0	22.7	27.0	2.4	
Total general		9.0	22.1	31.0	2.7	

Estacion	4007
NOMBRE	EL CARMEN (SMN)
ESTADO	CAMPECHE

		Temp Max (°C)				
Década	Año	Mín.	Prom.	Máx.	Desv. Est.	
2010	2016	20.0	31.9	39.0	3.4	
	2017	23.0	31.8	39.0	2.8	
	2018	21.0	31.1	37.0	2.8	
Total 2010		19.0	31.5	39.0	3.1	
Total general		18.0	32.0	45.0	3.4	



Registro Diario de Temperaturas Mínima y Máxima

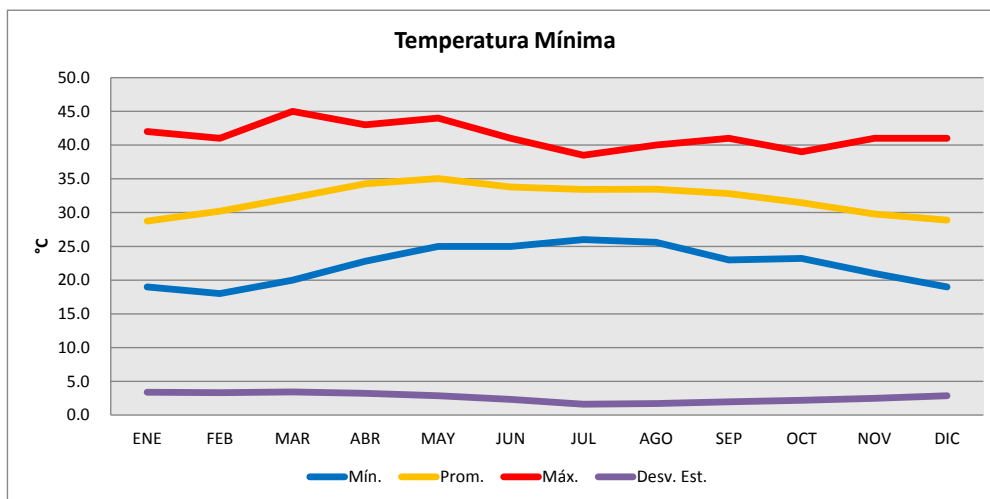
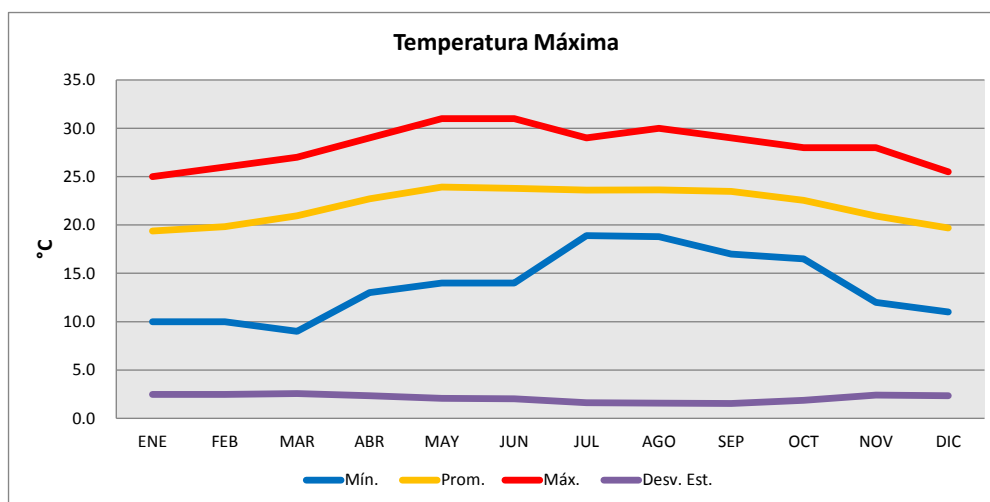


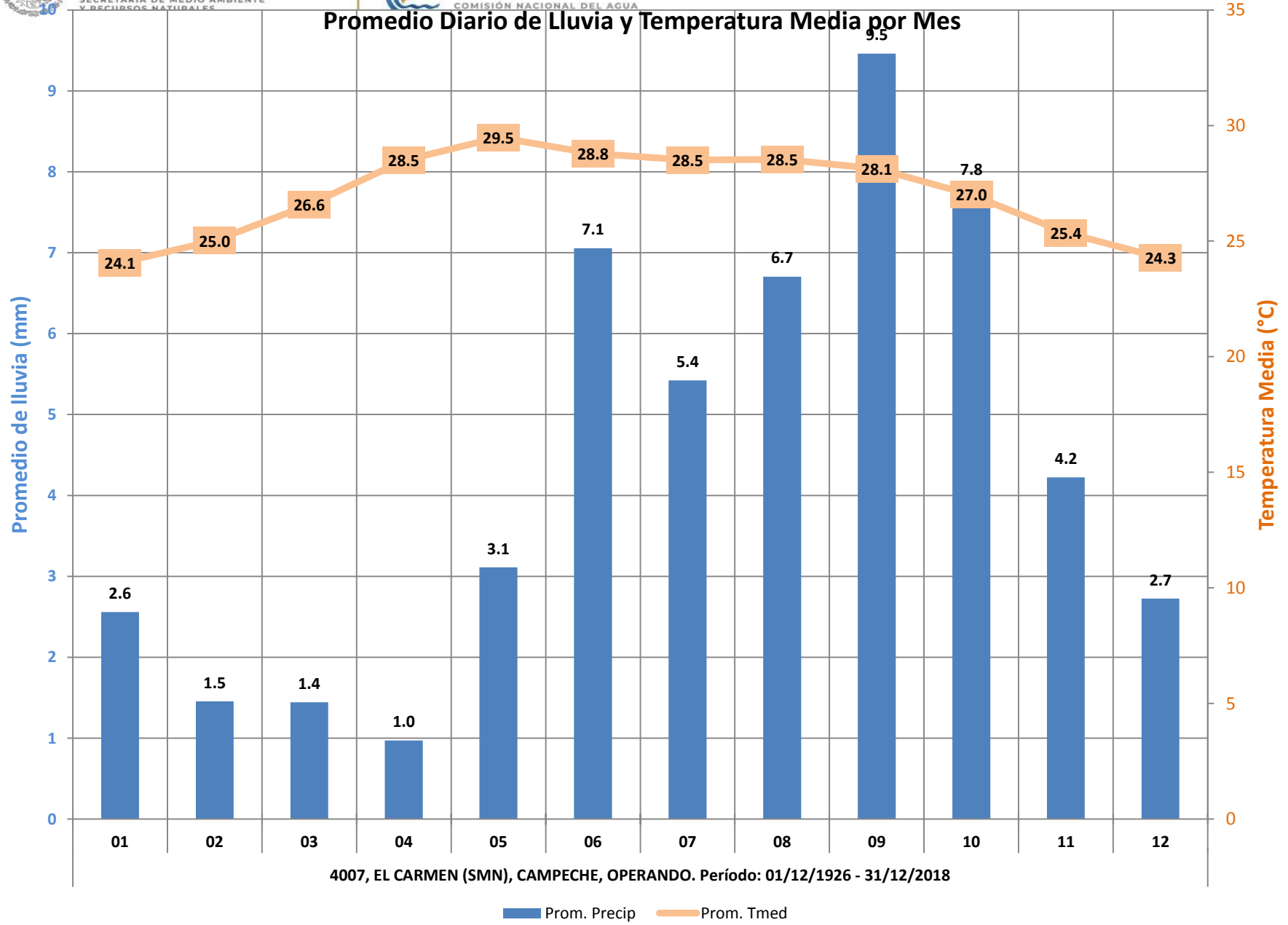
Estacion	4007
NOMBRE	EL CARMEN (SMN)
ESTADO	CAMPECHE

Estacion	4007
NOMBRE	EL CARMEN (SMN)
ESTADO	CAMPECHE

Temp Min (°C)					
Mes	Mín.	Prom.	Máx.	Desv. Est.	
ENE	10.0	19.4	25.0	2.5	
FEB	10.0	19.8	26.0	2.5	
MAR	9.0	20.9	27.0	2.6	
ABR	13.0	22.7	29.0	2.3	
MAY	14.0	23.9	31.0	2.1	
JUN	14.0	23.8	31.0	2.0	
JUL	18.9	23.6	29.0	1.6	
AGO	18.8	23.6	30.0	1.6	
SEP	17.0	23.5	29.0	1.5	
OCT	16.5	22.5	28.0	1.9	
NOV	12.0	20.9	28.0	2.4	
DIC	11.0	19.7	25.5	2.3	
Total general	9.0	22.1	31.0	2.7	

Temp Max (°C)					
Mes	Mín.	Prom.	Máx.	Desv. Est.	
ENE		19.0	28.7	42.0	3.4
FEB		18.0	30.2	41.0	3.3
MAR		20.0	32.2	45.0	3.4
ABR		22.8	34.3	43.0	3.2
MAY		25.0	35.0	44.0	2.8
JUN		25.0	33.8	41.0	2.3
JUL		26.0	33.4	38.5	1.6
AGO		25.6	33.5	40.0	1.7
SEP		23.0	32.8	41.0	2.0
OCT		23.2	31.5	39.0	2.2
NOV		21.0	29.8	41.0	2.5
DIC		19.0	28.9	41.0	2.9
Total general		18.0	32.0	45.0	3.4



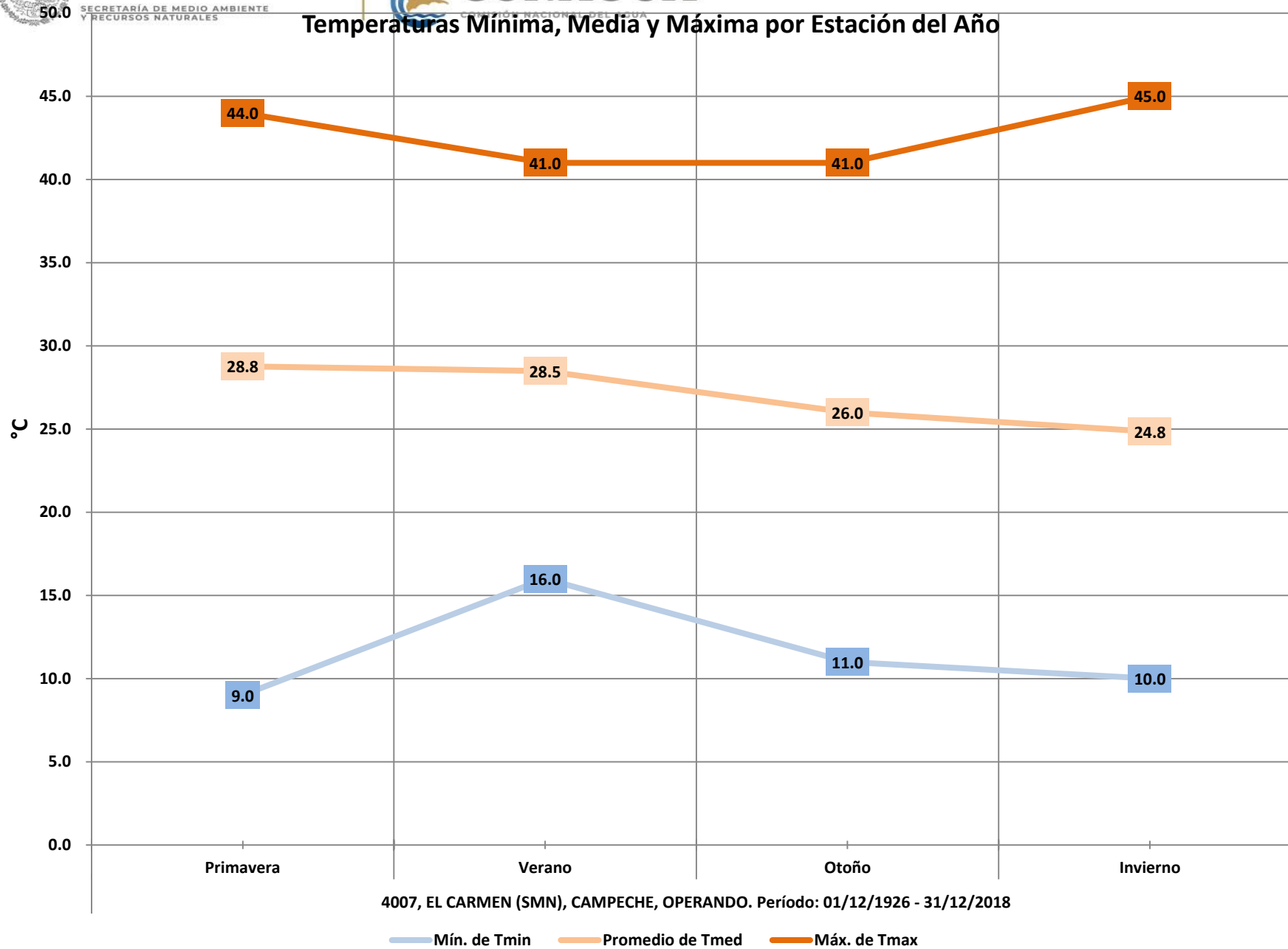


Estacion	4007
NOMBRE	EL CARMEN (SMN)
ESTADO	CAMPECHE

Década	Año	Promedios												
		Estación Primavera			Verano			Otoño			Invierno			
		Lluvia (mm)	T min (°C)	T max (°C)	Lluvia (mm)	T min (°C)	T max (°C)	Lluvia (mm)	T min (°C)	T max (°C)	Lluvia (mm)	T min (°C)	T max (°C)	
1920	1926													
	1927	0.3	23.4	31.8				0.0	22.2	27.9	2.3	21.9	28.2	
	1928	2.3	20.0	30.0	7.1	20.7	31.7	5.4	19.2	28.6	2.7	17.0	27.8	
	1929	4.1	21.6	32.5	5.1	21.7	32.0	7.4	20.1	29.4	2.5	18.9	27.2	
	1930	3.4	21.0	33.6	6.0	21.5	33.6	5.8	20.3	30.4	4.3	17.7	29.3	
	Total 1920	2.9	21.2	32.1	6.0	21.3	32.4	5.8	20.0	29.3	2.6	19.1	27.9	
	1930	1931	2.1	20.6	32.0	10.7	22.2	31.4	7.2	20.4	29.6	1.7	17.5	28.3
		1932	4.4	21.1	34.4	7.6	22.2	34.3	8.3	19.5	29.7	5.2	19.1	30.4
		1933	3.5	21.6	34.9	7.6	22.1	33.6	4.9	19.5	29.5	1.4	19.1	31.4
		1934	3.3	21.0	34.0	7.5	22.0	33.7	6.5	19.8	29.5	3.0	18.0	30.2
1935		4.1	21.7	36.8	7.2	21.7	33.0	2.9	19.1	30.5	1.1	17.1	29.9	
1936		5.3	23.1	34.1	10.5	24.9	33.0	9.8	22.9	30.3	1.1	18.9	31.3	
1937		6.8	24.1	34.0	9.3	24.7	32.7	2.0	21.9	29.2	2.3	22.2	31.8	
1938		2.7	24.2	34.8	9.5	24.5	32.4	12.1	21.5	29.3	1.0	21.2	31.1	
1939		2.7	24.0	35.7	6.4	24.6	35.3	7.3	22.1	30.1	2.0	21.8	32.1	
1940		2.7	23.7	33.0	2.5	24.4	33.0	4.5	22.4	31.1	1.2	19.0	27.7	
Total 1930	3.8	22.5	34.4	8.0	23.3	33.2	6.6	20.9	29.9	2.0	19.4	30.4		
1940	1941										0.8	17.9	29.3	
	1942	1.6	24.5	33.8	4.6	24.9	33.4	5.4	22.6	31.7	2.8	20.0	31.1	
	1943	2.1	23.8	34.4	5.5	24.6	35.0	3.5	21.7	31.6	2.9	20.5	30.8	
	1944	3.9	24.7	34.7	4.7	25.2	34.2	3.1	21.5	31.5	1.2	21.0	32.1	
	1945	1.1	24.5	35.8	10.2	24.3	34.1	4.2	21.9	34.6	3.2	20.7	34.1	
	1946	2.0	20.2	37.4	4.9	24.2	34.1	4.0	24.0	33.7	2.8	18.1	36.3	
	1947	2.8	17.0	34.3	7.7	20.4	34.4	7.3	20.4	34.8	3.9	19.8	30.0	
	Total 1940	2.2	23.1	35.1	6.2	24.1	34.2	4.4	22.0	32.7	2.5	19.8	32.2	
1950	1951				7.6	24.2	35.0	3.1	21.9	31.9	0.4	21.2	31.2	
	1952	5.0	23.8	33.3	5.1	23.8	34.4	8.0	21.5	30.0	0.8	20.9	31.9	
	1953	3.3	24.4	35.0	4.5	24.5	34.8	6.9	22.0	31.6	3.0	20.3	30.6	
	1954	7.2	24.4	34.6	4.3	24.5	32.7	2.4	21.2	27.6	1.0	20.5	30.1	
	Total 1950	5.2	24.2	34.3	5.0	24.3	34.1	5.1	21.6	30.3	1.5	20.6	30.9	
1980	1982				0.0	25.0	31.7							
	1984				0.0	22.0	33.0	16.5	20.4	30.8	7.4	19.8	29.5	
	1985	4.0	22.8	34.7	10.4	22.5	34.0	5.0	20.9	31.7	6.9	19.2	29.4	
	1986	4.1	21.3	34.7	6.2	22.5	34.4	5.7	21.1	31.6	1.9	18.5	30.6	
	1987	1.9	21.7	35.4	6.2	22.9	34.6	4.0	20.2	30.7	2.3	17.7	29.2	
	1988	0.9	22.2	36.3	7.0	23.0	34.6	6.4	20.5	30.5	2.4	18.8	29.6	
	1989	3.8	22.2	35.5	5.4	22.5	34.4	10.8	20.0	30.5	1.9	18.8	29.5	
	1990	4.7	22.2	35.5	7.6	22.5	33.9	5.5	20.4	31.2	3.1	19.6	30.4	
	Total 1980	3.2	22.1	35.3	6.7	22.7	34.2	7.8	20.5	31.0	3.2	18.8	29.8	
	1990	1991	0.4	23.2	37.5	7.1	21.6	34.9	9.4	20.1	30.8	1.6	19.2	30.9
1992		2.6	23.9	33.2	6.4	23.8	32.1	5.5	22.3	29.9	3.4	20.4	28.3	
1993		1.2	23.9	33.9	4.6	24.2	32.5	6.1	22.3	30.4	1.9	20.2	28.6	
1994		2.8	24.2	34.0	5.8	24.3	32.7	3.3	23.1	30.9	3.1	19.9	28.2	
1995		3.8	25.9	35.2	7.4	24.0	32.8	8.3	22.9	30.6	1.0	19.9	29.5	
1996		3.7	24.3	33.3	5.3	24.8	32.5	5.3	22.7	30.5	0.4	19.7	29.0	
1997		1.3	24.5	34.0	5.8	24.0	32.7	5.9	22.6	30.2	1.6	21.4	29.9	
1998		0.2	24.4	35.3	10.2	25.0	34.1	6.2	23.2	30.0	0.9	20.7	29.5	
1999		2.6	24.0	34.7	8.7	24.4	32.2	8.8	21.7	28.8	1.4	20.6	29.8	
2000		3.8	23.6	34.1	6.8	23.4	32.3	7.5	21.5	30.2	0.8	19.8	29.1	
Total 1990		2.2	24.2	34.5	6.8	24.0	32.9	6.6	22.2	30.2	1.6	20.2	29.3	
2000		2001	1.9	23.0	33.3	4.6	23.8	32.7	6.5	21.4	30.0	2.3	20.1	28.7
	2002	2.7	23.7	33.5	5.3	23.9	33.1	6.7	21.5	30.5	3.3	19.8	28.5	
	2003	3.3	23.1	35.3	7.2	23.9	33.5	6.8	21.4	29.8	0.3	20.0	30.1	
	2004	2.0	23.6	32.5	2.8	24.1	34.2	5.3	22.6	31.1	0.3	20.2	28.6	
	2005	1.8	23.7	35.1	7.2	23.6	33.2	5.2	21.6	29.6	0.3	19.7	30.4	
	2006	2.3	23.6	33.7	6.3	23.8	32.6	5.5	21.9	29.7	0.5	20.0	29.0	
	2007	0.5	24.1	35.2	8.1	24.3	34.2	3.9	21.7	30.5	3.0	21.0	28.7	
	2008	6.3	23.4	33.7	6.6	24.1	33.8	7.8	20.4	29.6	1.0	21.6	33.4	
	2009	2.3	23.8	34.8	3.9	24.2	34.4	5.2	21.8	31.9	1.2	19.3	29.8	
	2010	2.5	23.9	34.5	10.5	24.4	33.4	6.3	22.1	31.8	1.7	17.9	26.9	
Total 2000	2.6	23.6	34.2	6.2	24.0	33.5	5.9	21.6	30.4	1.4	20.0	29.4		
2010	2011	1.2	24.0	35.4	5.4	23.8	33.0	2.5	22.1	31.0	1.8	20.2	29.1	
	2012	3.3	23.8	34.1	6.4	24.2	32.8	2.4	21.4	30.2	0.5	20.9	29.8	
	2013	4.1	23.5	34.0	7.1	23.6	32.3	8.5	22.7	30.5	4.2	20.4	29.0	
	2014	6.7	23.6	32.2	3.8	24.3	32.3	3.3	21.7	29.8	4.7	20.5	28.3	
	2015	3.8	24.2	33.4	4.4	24.2	33.1	7.0	23.9	31.4	2.8	20.1	28.5	
	2016	1.9	23.8	34.8	6.8	24.0	33.1	5.0	22.8	31.2	2.5	20.3	28.3	
	2017	5.8	24.0	34.4	6.6	24.2	32.3	5.7	22.2	29.9	0.5	21.2	30.8	
	2018	1.9	23.5	33.0	7.2	23.9	32.4	7.1	22.5	30.0	2.0	20.2	29.1	
Total 2010	3.7	23.8	33.8	6.0	24.0	32.7	5.1	22.4	30.5	2.4	20.5	29.1		
Total general	3.1	23.2	34.3	6.6	23.6	33.4	6.1	21.5	30.5	2.1	19.8	29.9		



Temperaturas Mínima, Media y Máxima por Estación del Año





Lluvia Promedio y Máxima, por Estación del Año

